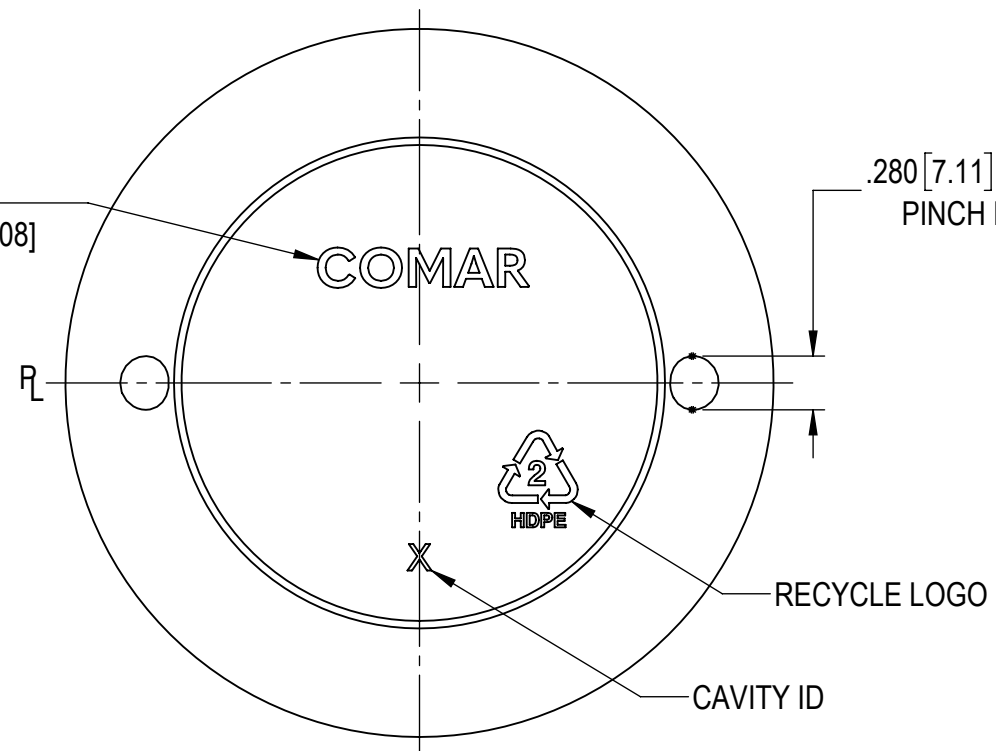


SECTION X-X
 SCALE 8:1
 M89SP400 NECK FINISH
 5 TPI, .200 PITCH
 1 1/4 FULL TURNS MIN

MANUFACTURER LOGO
 FONT: QUASIMODA, BOLD
 CHARACTER HEIGHT: .200 [5.08]



- NOTES:**
1. MATERIAL: HDPE
 2. GRAM WEIGHT: {36.0 GRAMS ± 3.0 GRAMS}
 3. CAPACITY: 561.0cc ± 13.0cc TO OVERFLOW
 4. MINIMUM WALL THICKNESS = .020 [0.51]
 5. DIMENSIONS SHOWN IN [] ARE EXPRESSED IN MILLIMETERS
 6. (BOXED) DIMENSIONS ARE CRITICAL TO PART FUNCTION
 7. {BRACKETED} DIMENSIONS ARE MAJOR INSPECTION DIMENSIONS

DRAWING IS IN INCHES AND [MILLIMETERS]		THIS DRAWING CONTAINS CONFIDENTIAL & PROPRIETARY INFORMATION AND MAY NOT BE REPRODUCED IN WHOLE OR PART WITHOUT WRITTEN AUTHORIZATION FROM COMAR LLC	
TOLERANCES UNLESS OTHERWISE SPECIFIED			
3 PLACE DECIMAL ± .030			
2 PLACE DECIMAL ± .05			
2 PLACE METRIC ± 0.76			
1 PLACE METRIC ± 1.3			
ANGLES ± 1°			
DO NOT SCALE DRAWING			

D	PRODUCTION RELEASE DWG: 61-1274 WAS SK-8084 REV C ADDED PART NO: 61-1274 ADDED MOLD NO: MB2528 REMOVE PREVIOUS REVISION FOR CLARITY	2/9/2022	TU	MMR
REV.	DESCRIPTION	DATE	APPROVED	DRN BY
TITLE 16oz CANISTER w/ M89SP400 NECK FINISH		COMAR™ 220 LAUREL ROAD VOORHEES, NJ 08043		
MOLD NO MB2528		PDM NO 000797	SCALE 1:1	
COMMENTS N/A		PART NO 61-1274		
STATUS STOCK		SIZE B	SHEET 1 OF 1	DWG NO 61-1274
				REV D