

SECTION A-A

STATIC TORQUE RECOMMENDATION: 23-40in-lbs
 REQUIREMENT MAY VARY DEPENDING UPON CONTAINER MATERIAL,
 NECK FINISH, AND CAPPING EQUIPMENT

DIMENSIONS ENCLOSED IN () INDICATE REFERENCE DIMENSIONS
 AND NO TOLERANCE LIMITS ARE ESTABLISHED

DIMENSIONS PRECEDED BY AN *** INDICATE THE DIMENSION IS
 PROCESS SENSITIVE. PROCESS SENSITIVE DIMENSIONS ARE
 VERIFIED TO BE WITHIN THE TOLERANCE LIMITS DURING THE
 PRODUCTION RUN. ALL REMAINING DIMENSIONS ARE VERIFIED AT
 PRODUCTION VALIDATION.

PROPRIETARY AND CONFIDENTIAL

THIS DRAWING IS PROTECTED BY COPYRIGHT AND CONTAINS
 INFORMATION PROPRIETARY TO MOLD-RITE PLASTICS AND ITS
 SUBSIDIARIES. ANY REPRODUCTION, DISCLOSURE, OR USE OF
 ITS CONTENTS OR ANY PART THEREOF IS EXPRESSLY
 PROHIBITED EXCEPT AS MOLD-RITE PLASTICS AND ITS
 SUBSIDIARIES OTHERWISE MAY AGREE IN WRITING.

THIS MASTER DOCUMENT IS CONTROLLED ELECTRONICALLY.
 PRINTED OR DOWNLOADED COPIES ARE UNCONTROLLED.
 DOCUMENT USERS ARE RESPONSIBLE FOR ENSURING THEY HAVE
 THE LATEST REVISION PRIOR TO USE.

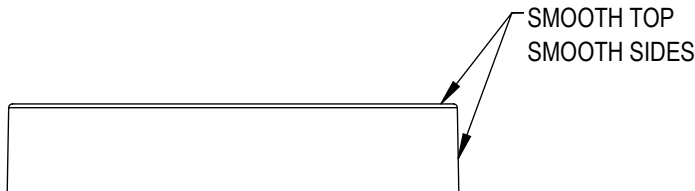
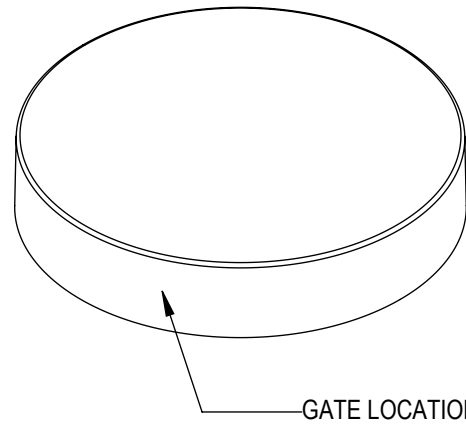
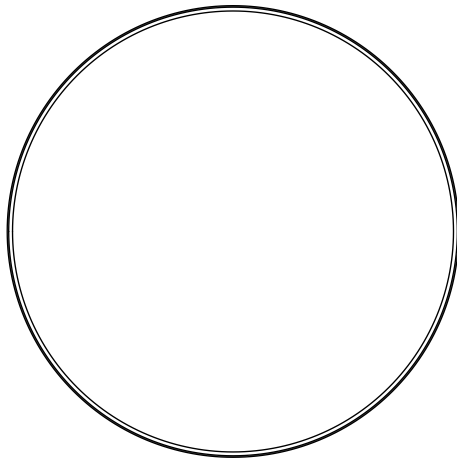
THE PART DIMENSIONS DEPICTED ARE THOSE WHICH HAVE GENERALLY BEEN FOUND TO BE FUNCTIONAL BASED ON INDUSTRY EXPERIENCE.
 BECAUSE OF VARIABILITY IN CONTAINER FINISHES, EACH CLOSURE/FINISH SYSTEM SHOULD BE INDIVIDUALLY EVALUATED AND TESTED TO
 ENSURE IT MEETS APPLICABLE PERFORMANCE CRITERIA.

MOLD-RITE PLASTICS AND ITS SUBSIDIARIES RESERVE THE RIGHT TO REVISE ANY OR ALL SPECIFICATIONS AND REQUIREMENTS.

REFERENCE	DIMENSION	TOLERANCE	UNITS
Ø E	2.138 [54.30]	±0.015 [0.38]	in [mm]
Ø T'	2.235 [56.77]	±0.015 [0.38]	in [mm]
H	0.400 [10.16]	±0.010 [0.25]	in [mm]
OAH	0.459 [11.65]	±0.012 [0.30]	in [mm]
OD	2.344 [59.54]	±0.015 [0.38]	in [mm]
PART WEIGHT	5.80	± 1.50	g
THREAD DETAIL INFORMATION:	6 THREADS PER INCH	0.167" [4.24] PITCH	415° FULL DEPTH THREADS
DRAWN BY:	DAS	6/3/2016	DWG SIZE: 8.5" x 11"
ENG APPR:	LES	7/17/2023	SCALE: 1:1
QA APPR:	HW	07/18/2023	SHEET: 1 OF 3



DRAWING TITLE: 58-400 CT CLOSURE S (SMOOTH SIDE, SMOOTH TOP)			
MATERIAL: POLYPROPYLENE			
DRAWING TYPE: CUSTOMER		DISTRIBUTION CODE: D	
REPLACES DRAWINGS: C-1013			
MODEL NUMBER: PM 10988 58-400 CT			
DWG SIZE: 8.5" x 11"	DRAWING NUMBER:	REVISION:	
SCALE: 1:1	SHEET: 1 OF 3	CQA-10746	00.AB



DIMENSIONS ENCLOSED IN () INDICATE REFERENCE DIMENSIONS AND NO TOLERANCE LIMITS ARE ESTABLISHED

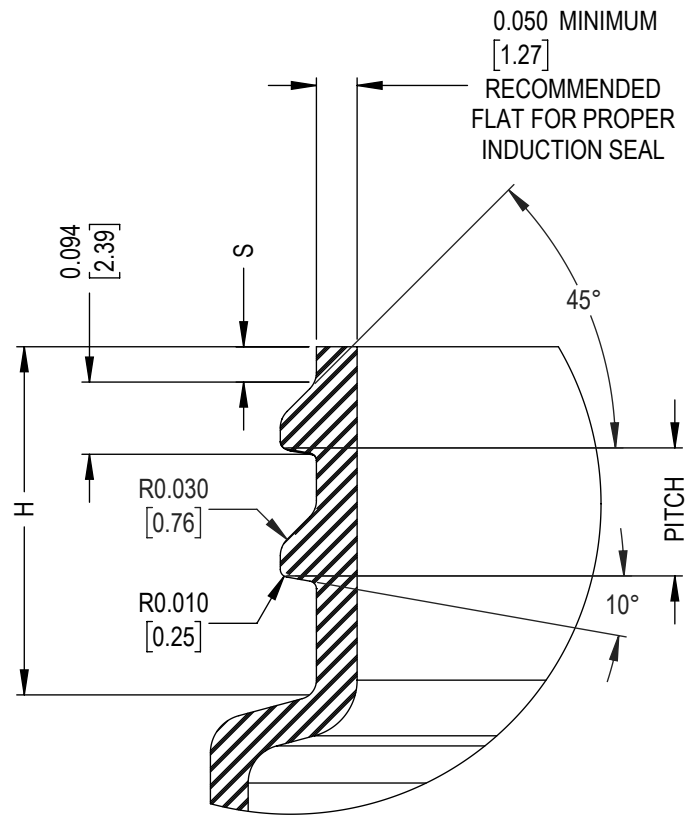
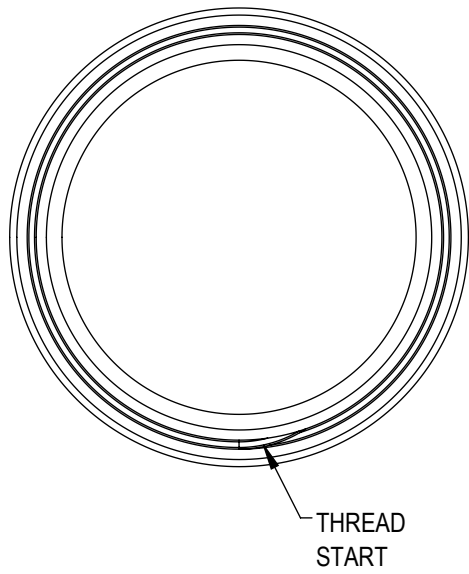
PROPRIETARY AND CONFIDENTIAL
THIS DRAWING IS PROTECTED BY COPYRIGHT AND CONTAINS INFORMATION PROPRIETARY TO MOLD-RITE PLASTICS AND ITS SUBSIDIARIES. ANY REPRODUCTION, DISCLOSURE, OR USE OF ITS CONTENTS OR ANY PART THEREOF IS EXPRESSLY PROHIBITED EXCEPT AS MOLD-RITE PLASTICS AND ITS SUBSIDIARIES OTHERWISE MAY AGREE IN WRITING

THE PART DIMENSIONS DEPICTED ARE THOSE WHICH HAVE GENERALLY BEEN FOUND TO BE FUNCTIONAL BASED ON INDUSTRY EXPERIENCE
BECAUSE OF VARIABILITY IN CONTAINER FINISHES, EACH CLOSURE/FINISH SYSTEM SHOULD BE INDIVIDUALLY EVALUATED AND TESTED TO ENSURE IT MEETS APPLICABLE PERFORMANCE CRITERIA.
MOLD-RITE PLASTICS AND ITS SUBSIDIARIES RESERVE THE RIGHT TO REVISE ANY OR ALL SPECIFICATIONS AND REQUIREMENTS.

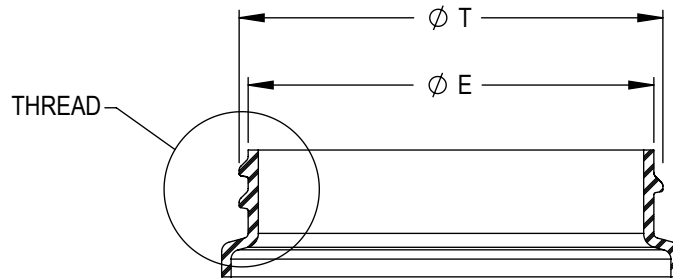
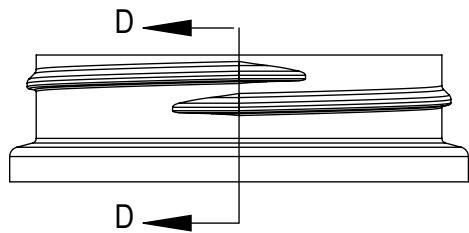
DATE	REV	N/P	DESCRIPTION	ENG	DRW
07/17/2023	00	AB	UPDATE DRAWING FORMAT & LOGO. UPDATED RNF "H" TO AVOID INTERFERENCE.	LES	LES
05/11/2018	00	AA	DRAWING UPDATED TO REFLECT HISTORICAL RUN DATA & PROCESS CAPABILITY. NO CHANGES TO THE STEEL OR PART HAVE OCCURRED.	BDG	DAS
REVISION HISTORY					
REVISIONS: REV: A PHYSICAL CHANGE TO THE PART IMPACTING FIT, FORM OR FUNCTION N/P: DRAWING OR SPECIFICATION CHANGE ONLY					



DRAWING TITLE:		
58-400 CT CLOSURE S (SMOOTH SIDE, SMOOTH TOP)		
THIS MASTER DOCUMENT IS CONTROLLED ELECTRONICALLY. PRINTED OR DOWNLOADED COPIES ARE UNCONTROLLED. DOCUMENT USERS ARE RESPONSIBLE FOR ENSURING THEY HAVE THE LATEST REVISION PRIOR TO USE.		
DRAWING TYPE: CUSTOMER	DISTRIBUTION CODE: D	
DWG SIZE: 8.5" x 11"	DRAWING NUMBER:	REVISION:
SCALE: 1:1 & NOTED	SHEET: 2 OF 3	CQA-10746 00.AB



DETAIL THREAD
SCALE 4 : 1



SECTION D-D

RECOMMENDED NECK FINISH IS DETERMINED FOR PROPER FUNCTIONAL PERFORMANCE WITH MOLD-RITE CLOSURE. USE OF MOLD-RITE CLOSURE WITH CONTAINER NOT MATCHING RECOMMENDED NECK FINISH SHOULD BE TESTED AND CONFIRMED FOR APPLICATION BY THE USER.

NOMINAL ORIENTATION OF CLOSURE (IF INDICATED) IS BASED ON NOMINAL DIMENSIONS OF BOTH CLOSURE AND RECOMMENDED NECK FINISH. FOR EXACT ORIENTATION, EACH CONTAINER SHOULD BE EVALUATED ON A CASE BY CASE BASIS.

DIMENSIONS ENCLOSED IN () INDICATE REFERENCE DIMENSIONS AND NO TOLERANCE LIMITS ARE ESTABLISHED

PROPRIETARY AND CONFIDENTIAL
THIS DRAWING IS PROTECTED BY COPYRIGHT AND CONTAINS INFORMATION PROPRIETARY TO MOLD-RITE PLASTICS AND ITS SUBSIDIARIES. ANY REPRODUCTION, DISCLOSURE, OR USE OF ITS CONTENTS OR ANY PART THEREOF IS EXPRESSLY PROHIBITED EXCEPT AS MOLD-RITE PLASTICS AND ITS SUBSIDIARIES OTHERWISE MAY AGREE IN WRITING

THE PART DIMENSIONS DEPICTED ARE THOSE WHICH HAVE GENERALLY BEEN FOUND TO BE FUNCTIONAL BASED ON INDUSTRY EXPERIENCE. BECAUSE OF VARIABILITY IN CONTAINER FINISHES, EACH CLOSURE/FINISH SYSTEM SHOULD BE INDIVIDUALLY EVALUATED AND TESTED TO ENSURE IT MEETS APPLICABLE PERFORMANCE CRITERIA.

MOLD-RITE PLASTICS AND ITS SUBSIDIARIES RESERVE THE RIGHT TO REVISE ANY OR ALL SPECIFICATIONS AND REQUIREMENTS.

NECK FINISH DIMENSIONS ASSUME ZERO THICKNESS (NO) LINER

REFERENCE	DIMENSION	TOLERANCE	UNITS
Ø E	2.113[53.67]	±0.017 [0.43]	in [mm]
Ø T	2.207[56.07]	±0.017 [0.43]	in [mm]
S	0.046 [1.17]	±0.015 [0.38]	in [mm]
H	0.410 [10.41]	MINIMUM	in [mm]
THREADS PER INCH	6		
PITCH	0.167 [4.24]		in [mm]



DRAWING TITLE:

58-400 CT CLOSURE
RECOMMENDED NECK FINISH

THIS MASTER DOCUMENT IS CONTROLLED ELECTRONICALLY. PRINTED OR DOWNLOADED COPIES ARE UNCONTROLLED. DOCUMENT USERS ARE RESPONSIBLE FOR ENSURING THEY HAVE THE LATEST REVISION PRIOR TO USE.

DRAWING TYPE: CUSTOMER DISTRIBUTION CODE: D

DWG SIZE: 8.5" x 11" DRAWING NUMBER: REVISION:

SCALE: 1:1 & NOTED SHEET: 3 OF 3 CQA-10746 00.AB

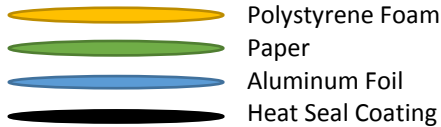


Liner Product Data Sheet

Title: (A01)MRPLN04.020 FOAM R SFYP

Description of Product: Universal Heat Seal Foam Liner

Detailed Product Description: This product is a one piece universal heat seal consisting of foam backing, paper, aluminum foil and heat seal layer.



Regulatory Compliance:

21 CFR 177.1210 Closures with sealing gaskets for food containers.

Typical Properties: This specification, designated by Mold-Rite Plastics, includes all liners that meet the typical value data listed below:

Typical Properties	Typical Value
Overall Thickness <ul style="list-style-type: none"> • Polystyrene Foam • Paper • Aluminum Foil • Heat Seal Coating 	0.024 inch +/- 10% <ul style="list-style-type: none"> • .0200 inch • .0025 inch • .0003 inch • .0015 inch
Drug Master File	16574
Printed	"SEALED FOR YOUR PROTECTION"
Print Color	Red
Oxygen Transmission	Essentially Zero
Water Vapor Transmission	Essentially Zero

Disclaimers:

1. These are typical properties.
2. All data values and regulatory requirements were obtained from manufacturer product data sheets (where applicable).
3. Product data sheets data are intended as a general guide only and do not necessarily represent results that may be obtained elsewhere.
4. Use of Mold-Rite Plastics products must be guided by users' methods for selection of proper formulation.
5. Mold-Rite Plastics disclaims any responsibility for misuse or misapplication of its products.
6. Mold-Rite Plastics liability and customer's exclusive remedy for any claims arising out of sales of its products are expressly limited at: customer option for replacement not to exceed the purchase price plus transportation charges thereon.

Rev. 071818