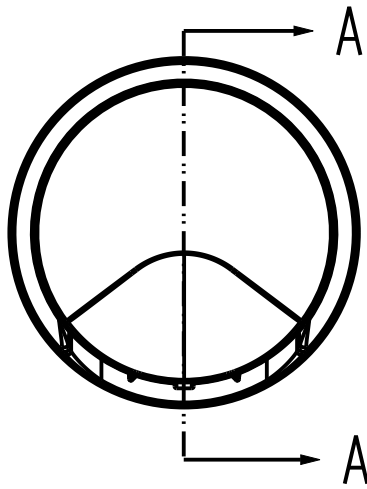
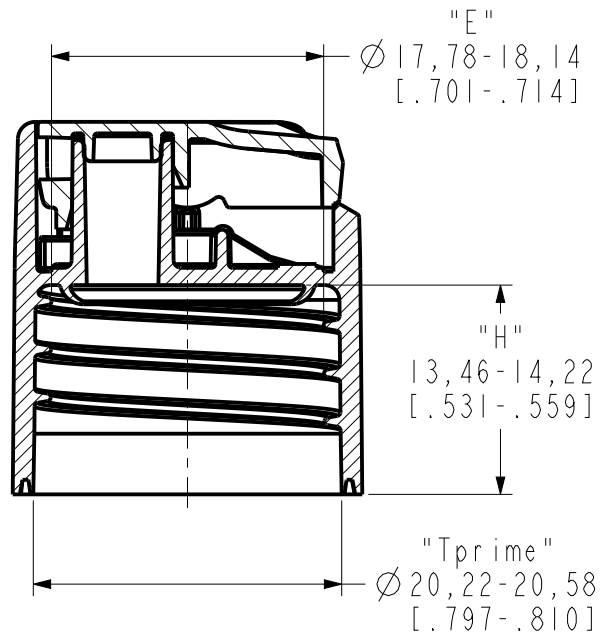
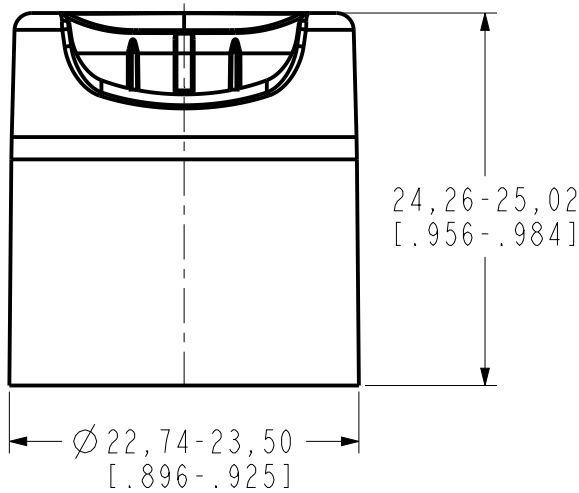


THE BOTTLE NECK DIMENSIONS SHOWN ARE BASED UPON CURRENT KNOWLEDGE. IT IS THE RESPONSIBILITY OF THE RECEIVER OF THE INFORMATION CONTAINED IN THIS DRAWING TO TEST FOR FIT AND FUNCTION OF THE TOTAL PACKAGE. DIMENSIONS SHOWN ARE INTENDED FOR POLYETHYLENE BOTTLES ONLY. IF ANOTHER BOTTLE MATERIAL IS USED, SOME DIMENSIONS AND TOLERANCES MAY REQUIRE ADJUSTMENT.





NOTES:


1. THE "T'" AND "E" DIAMETERS ARE THE AVERAGE OF 2 MEASUREMENTS TAKEN APPROXIMATELY 90° APART.
2. THE "T'" DIAMETER IS TAKEN TOWARD THE BOTTOM OF THE CLOSURE.
3. THE "E" DIAMETER IS TAKEN AS CLOSE TO THE INSIDE DECK AS POSSIBLE.
4. THE EFFECTIVE "H" DIMENSION CAN BE ESTIMATED BY SUBTRACTING 0,71 [.028] FROM THE SPECIFIED "H" DIMENSION. THIS REFLECTS THE ESTIMATED COMPRESSION OF THE SEALING MECHANISM AT NOMINAL APPLICATION TORQUE.



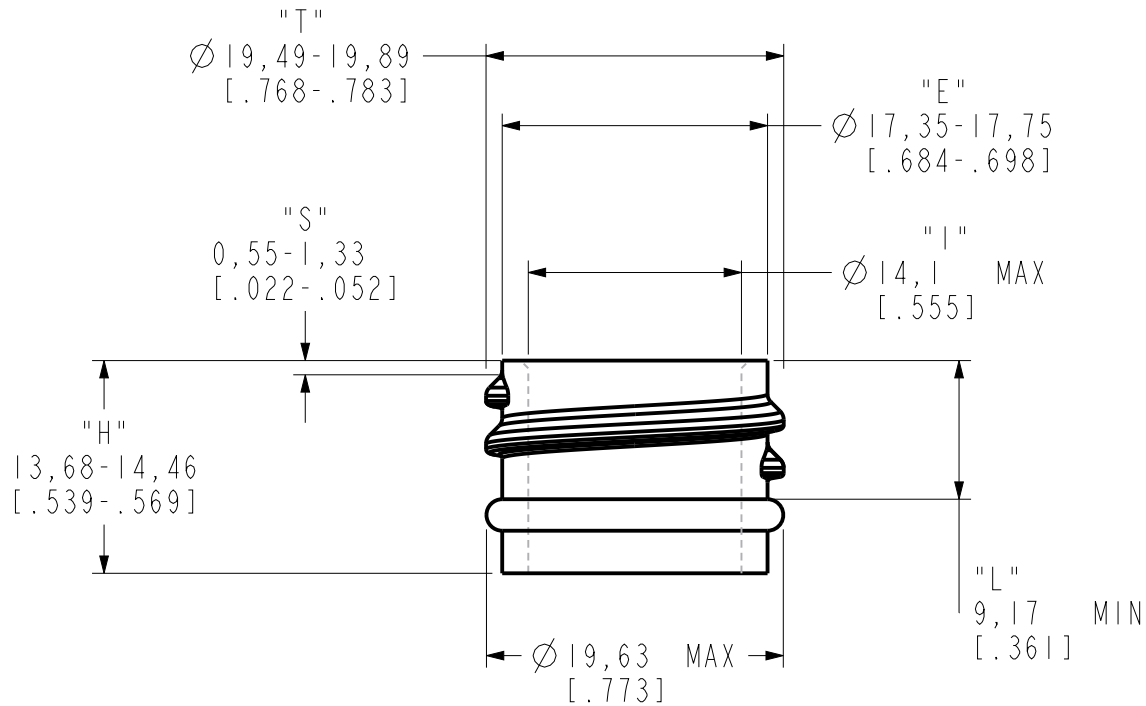
NOMINAL ORIFICE SIZES AVAILABLE

-  2,79 X 4,19 [.110 X .165]
-  2,79 X 6,86 [.110 X .270]


SECTION A-A

REV.	REVISION DESCRIPTION	PROD. ENG.	REV. DATE
-	NEW DRAWING	-	-
 CONFIDENTIAL Possession of this drawing is an acknowledgement that it and its contents are the exclusive property of Aptar. This drawing may not be reproduced in any form whatsoever nor given to any third party without written permission from Aptar.		FLAT E-DISC TOP, 20-410 THREAD, CRAB CLAW SEAL AND GLOSS BODY WITH GLOSS ACTUATOR	
		CLOSURE WEIGHT: 3.3 gms. REF.	SHEET 1 OF 2
DWG. BY: K. SMITH		DATE: 02-NOV-23	
CONFIRM CURRENT REVISION PRIOR TO USE			
CUSTOMER SPECIFICATION DRAWING		DWG. NO: CS27642694--	

THE BOTTLE NECK DIMENSIONS SHOWN ARE BASED UPON CURRENT KNOWLEDGE. IT IS THE RESPONSIBILITY OF THE RECEIVER OF THE INFORMATION CONTAINED IN THIS DRAWING TO TEST FOR FIT AND FUNCTION OF THE TOTAL PACKAGE. DIMENSIONS SHOWN ARE INTENDED FOR POLYETHYLENE BOTTLES ONLY. IF ANOTHER BOTTLE MATERIAL IS USED, SOME DIMENSIONS AND TOLERANCES MAY REQUIRE ADJUSTMENT.



RECOMMENDED NECK FINISH
 LAND MUST BE SMOOTH AND FREE
 OF NICKS OR RAGGED EDGES
 8 T.P.I. "M" STYLE THREAD
 USE OF BEAD IS OPTIONAL

REV.	REVISION DESCRIPTION	PROD. ENG.	REV. DATE
-	SEE SHEET 1 FOR REVISION DESCRIPTION	-	-
 CONFIDENTIAL Possession of this drawing is an acknowledgement that it and its contents are the exclusive property of Aptar. This drawing may not be reproduced in any form whatsoever nor given to any third party without written permission from Aptar.		FLAT E-DISC TOP, 20-410 THREAD, CRAB CLAW SEAL AND GLOSS BODY WITH GLOSS ACTUATOR	
		CLOSURE WEIGHT: 3.3 gms. REF.	SHEET 2 OF 2
DWG. BY: K. SMITH		DATE: 02-NOV-23	
CONFIRM CURRENT REVISION PRIOR TO USE			
CUSTOMER SPECIFICATION DRAWING			DWG. NO: CS27642694--