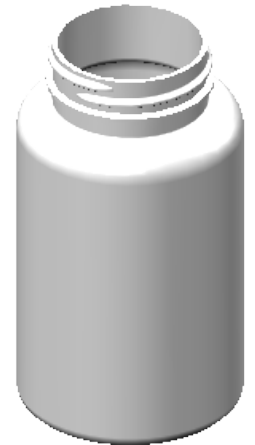
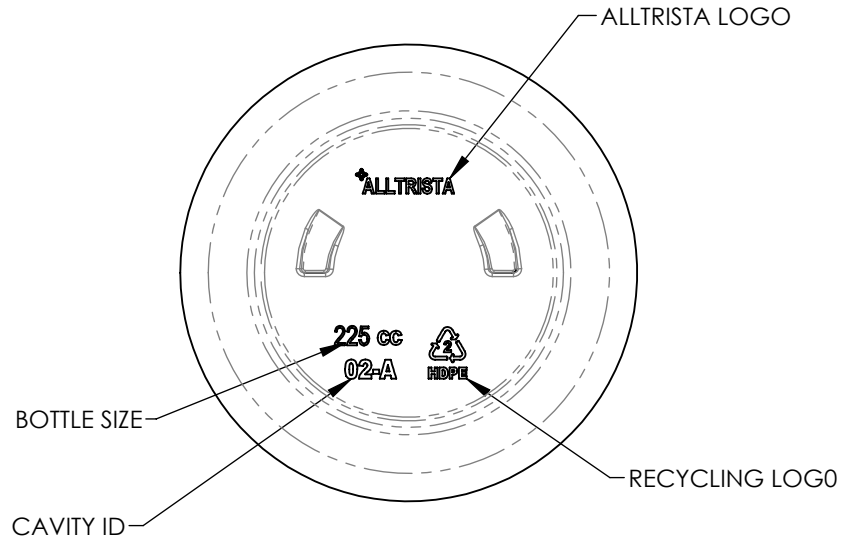
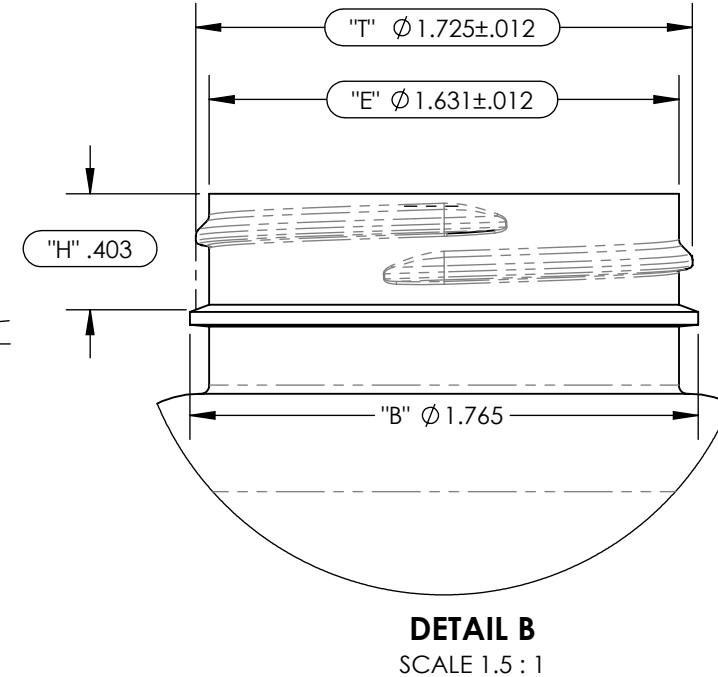
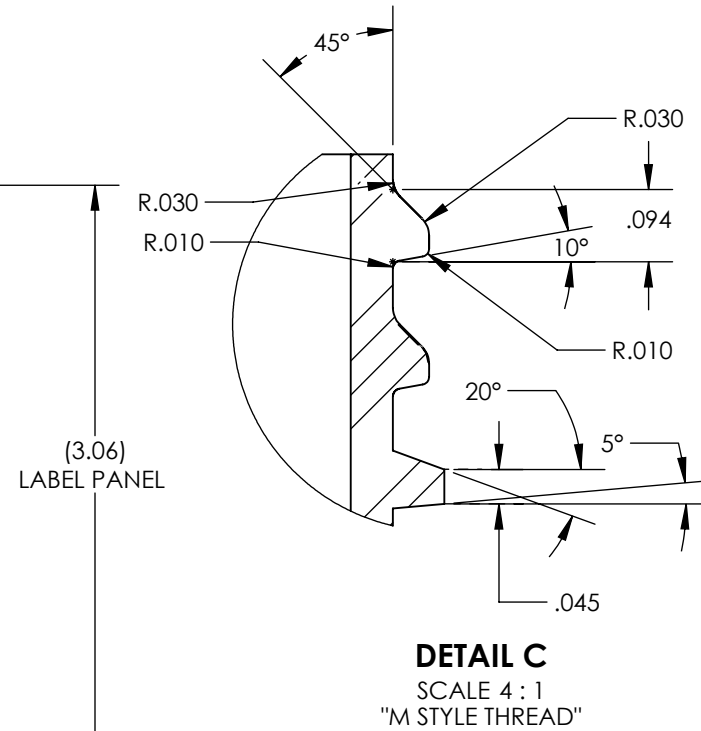
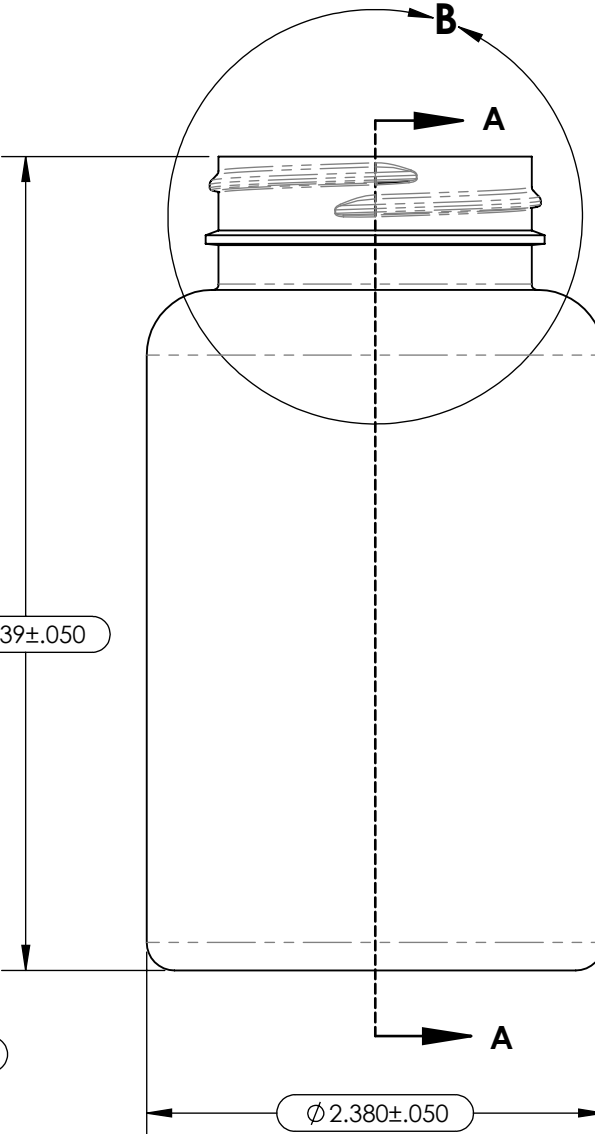
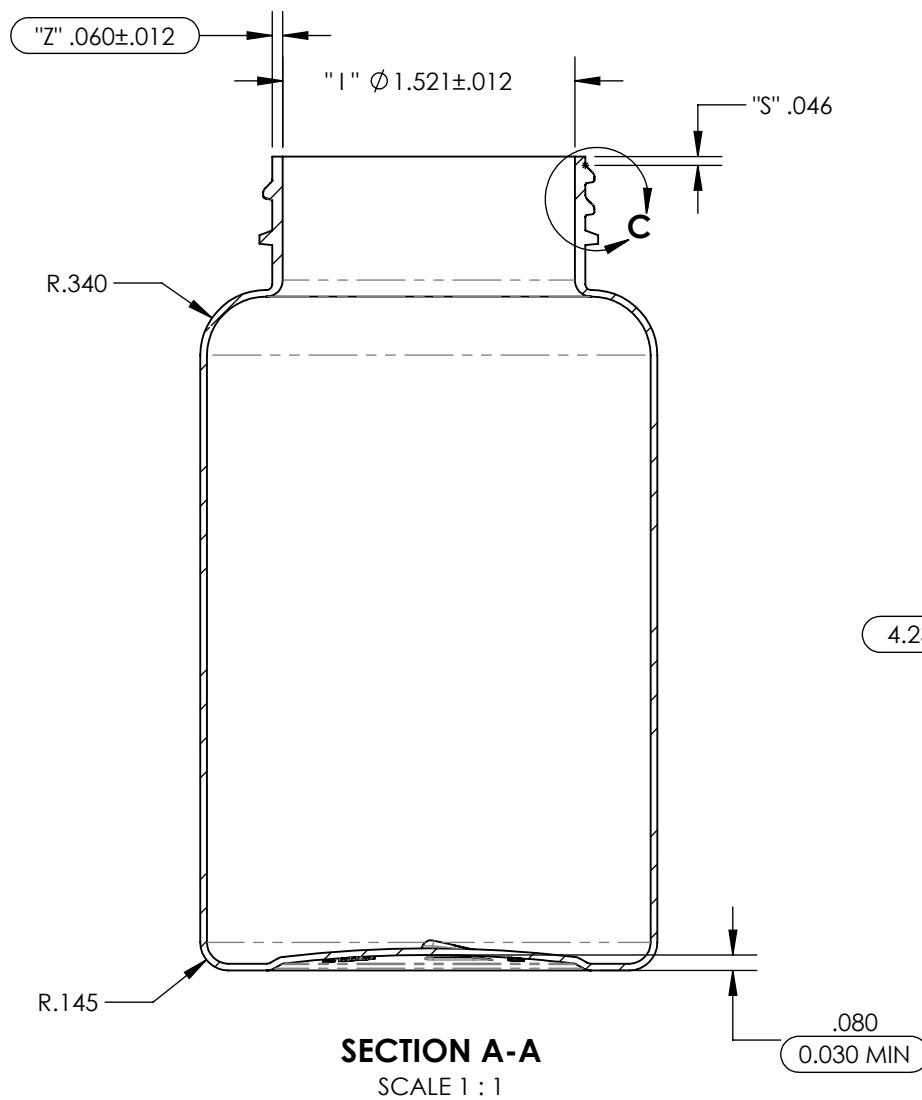



ECN/ECO	REV	DESCRIPTION	DRAWN	CHECKED	APPROVED
154453	A	RELEASE FOR PRODUCTION	KDM 10/25/22	DM 10/25/22	JJS 10/25/22



- NOTES:**
1. MATERIAL: SEE PRODUCT SPECIFICATION
  2. NECK FINISH: M45-400, 6 THREADS PER INCH
  3. MINIMUM WALL THICKNESS: SEE PRODUCT SPECIFICATION
  4. (X.X) DENOTES CRITICAL DIMENSION
  5. ENGRAVING: 0.08" TALL X 0.01" EMBOSSED
  6. FINISH: SPI-C3
  7. FLASH NOT TO EXCEED .01"
  8. OVERFLOW CAPACITY: 256 ± 7cc
  9. WEIGHT: SEE PRODUCT SPECIFICATIONS

THIS DRAWING IS CONFIDENTIAL AND IS THE SOLE PROPERTY OF ALLTRISTA PLASTICS AND IS NOT TO BE REPRODUCED OR DISTRIBUTED, IN ANY FORM, WITHOUT PERMISSION.	DRAWN: PWH	DATE: 02/19/20	 1303 S. Batesville Rd. Greer, SC 29650-9301
	CHECKED:	DATE:	
APPROVED:	DATE:		
ALL DIMENSIONS IN INCHES. TOLERANCES UNLESS OTHERWISE SPECIFIED: 2 PL DEC +/- .050 3 PL DEC +/- .015 ANGLES +/- 5°  ALL UNDIMENSIONED FEATURES TO HAVE A TOLERANCE OF ±.010"	CUSTOMER:		TITLE: <b>225cc BOTTLE (45-400)</b>
	CUSTOMER PART NO.:		PART/DWG NO.:
	MOLD NO.: 2718	SCALE: 1:1	SHEET: 1 OF 1
			21AP-12191-17