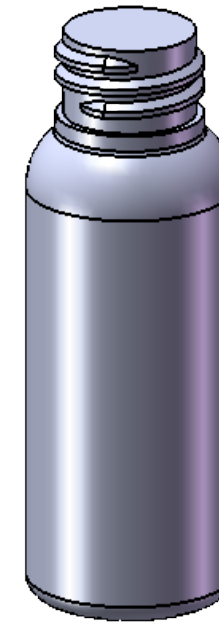
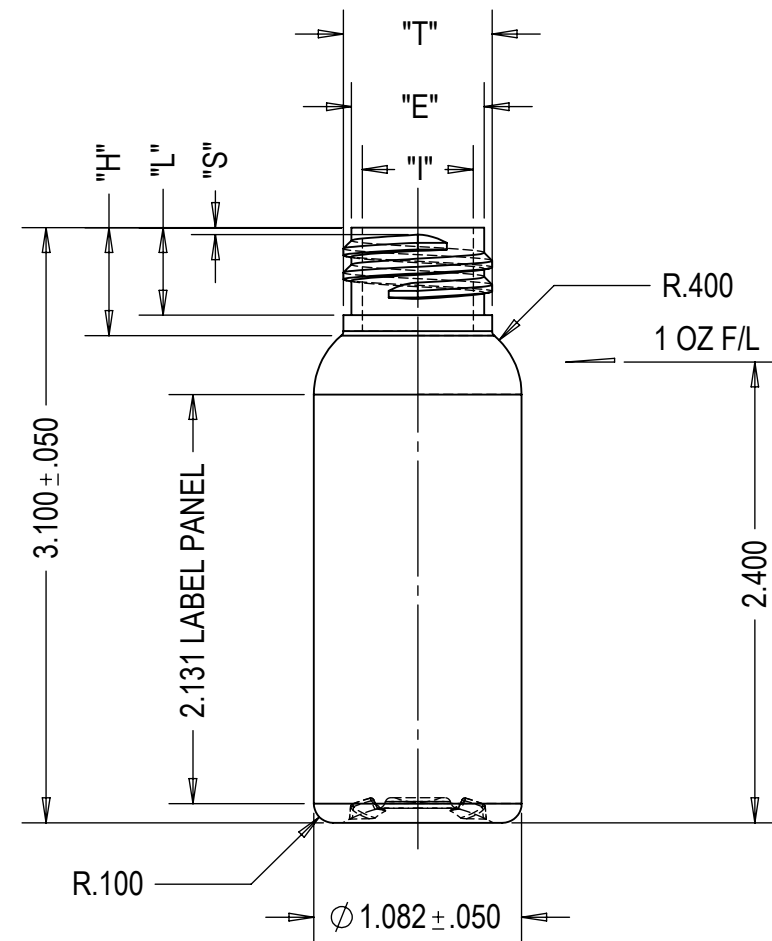
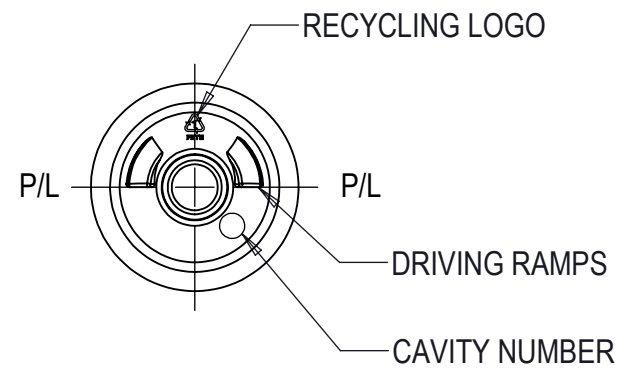


NO.	DESCRIPTION	DATE




AVAILABLE:

1. SKU#1116, CLEAR
2. SKU#1194, BLACK
3. SKU#1203, WHITE



PROPRIETARY AND CONFIDENTIAL
 THE INFORMATION CONTAINED IN THIS
 DRAWING IS THE SOLE PROPERTY OF
 INTERNATIONAL BOTTLE CORP. ANY
 REPRODUCTION IN PART OR AS A WHOLE
 WITHOUT THE WRITTEN PERMISSION OF
 INTERNATIONAL BOTTLE CORP. IS
 PROHIBITED.

"T" .775 ± .008	HELIX ANG. 3°7'	NAME	DATE	 Bottlecorp www.bottlecorp.com Tel: 905-235-4000 Fax: 905-235-4200
"E" .691 ± .008	CUTTER DIA. .375	DRAWN	CAD1 DEC 04/17	
"S" .037 ± .015	T.P.I. 8	CHECKED		TITLE:
"L" .456 MIN	PITCH .125	ENG APPR.		30 ML/1 OZ BULLET ROUND
"H" .554 ± .015	THREAD TURNS 2	MFG APPR.		DWG. NO.
"I" .578		Q.A.		IBC-1120-V02-R01
"W"		MATERIAL: PETE		SCALE: 1:1
		WEIGHT: 9G ± 1G		
		FILL CAPACITY: 30ML ± 2ML		
		O/F CAPACITY: 34ML ± 2ML		
		NECK FINISH M20-SP410		