



FPT300F

Homopolymer Polypropylene

- Good Mold Release, Excellent Part Finish (Low Bloom)
- Suggested Uses Include Housewares, Caps and Closures, Mugs / Cups, Thin-Walled Containers

Property	Units	Typical Value	Test Method
Nominal Melt Flow Rate (230°C/2.16kg)	g/10 min	30	ASTM D1238
Tensile Strength at Yield (2 in/min, 50 mm/min)	psi MPa	4,800 33	ASTM D638
Elongation at Yield (2 in/min, 50 mm/min)	%	10	ASTM D638
Flexural Modulus (0.05 in/min, 1.3 mm/min, 1% secant)	psi MPa	200,000 1,379	ASTM D790A
Notched Izod Impact Strength at 23°C	ft-lbs/in J/m	0.7 37	ASTM D256A
Rockwell Hardness	R	104	ASTM D785

Information contained herein is considered accurate to our best knowledge. It is offered for your consideration and investigation, and is not to be construed as a representation or warranty, expressed or implied, for which Braskem assumes legal responsibility. Our warranties are limited to those expressly stated in formal contracts or in conditions of sale on our invoices and order acceptances. Conditions and methods of use vary and are beyond the control of Braskem. Braskem, therefore, disclaims any liability incurred as a result of the use of its products in accordance with the data contained herein. No information herein shall be construed as an offer of indemnity for infringement or as a recommendation to use these products in such a manner as to infringe any patent, domestic or foreign.

For cautions and other information relating to handling of
and exposure to this product, please see material safety
data sheet code number C4001 published by Braskem.

550 Technology Drive
Pittsburgh, PA 15219
1-800-223-8871

Revision Date: Monday,
March 23, 2009
www.braskem.com

MOLD-RITE PLASTICS LLC.
1 Plant Street P.O. Box 160
Plattsburgh NY 12901
(518)561-1812
<https://www.mrpcap.com>



Product Data Sheet

MRPWH01 White

Product Description

This specification designated by Mold-Rite Plastics covers all colorants that meet the typical value data listed below.

Regulatory Compliance

FDA – Title 21 CFR Section 170-199 for Food & Drug Contact

RoHS Compliant

CONEG/Heavy Metal Compliant

Proposition 65 Compliant

Typical Properties	Typical Value
Density	.90
Melt Index	30
Pellets	Standard
Recommended Let Down Ratio	50:1
Carrier Resin	PP
Estimated Heat Stability	450-500 °F
Visual Evaluation	Excellent
Additives	None
DE Tolerance	< 2.00

For further regulatory information, contact Mold-Rite Plastics customer service or sales department.

Notes: These are typical properties not to be construed as specifications. Mold-Rite Plastics reserves that right to include any other colorant that meets that above data values and regulatory requirements.

This product data sheet covers multiple colorant formulations that meet the above typical data values and regulatory requirements. All listed formulas have similar physical, chemical and processing properties. Listed known formulas; Polymer Concentrates – 10536, Penn Color 60W5221

All results were obtained from manufacturer product data sheets (where applicable). The data are intended as a general guide only and do not necessarily represent results that may be obtained elsewhere. The use of Mold-Rite Plastics products must be guided by the users own methods for selection of proper formulation. Mold-Rite Plastics disclaims any responsibility for misuse or miss application of its products. Mold-Rite Plastics liability and customer's exclusive remedy for any claims arising out of sales of its products are expressly limited at customer option for replacement not to exceed the purchase price plus transportation charges thereon in respect to any material which damage is claimed.



PRODUCT DATA SHEET

HS 035 HEAT SEAL/20F

MRP Description - (021)HS035.020 R SFYP

PRODUCT DESCRIPTION

Description: A paper-backed aluminum foil coated with a clear heat sealable coating blend of high molecular weight ethylene and vinyl acetate copolymers laminated to polystyrene foam.

FDA Status: Complies with Federal Regulations of H.E.W., FDA, sections 175.105, 175.300, 176.170, 176.180, 177.1350, 178.3710, and 182.1. It is entered in SANCAP Liner's food master file FMF 166 and drug master file DMF 2518.

PHYSICAL AND CHEMICAL PROPERTIES

1. **Color** Aluminum
2. **Thickness, mils**
 - a) Overall 22.41 - 28.33
 - b) Heat Seal Coating 1.50 - 3.00
 - c) Aluminum Foil 0.31 - 0.38
 - d) Paper 2.60 - 3.00
 - e) Foam 18.00 - 22.00
3. **Basis Wt. Lbs./Ream 3000 ft.²**
 - a) Overall 134.3 - 176.9
 - b) Heat Seal Coating 20.7 - 41.9
 - c) Aluminum Foil 13.3 - 16.2
 - d) Paper 33.3 - 36.8
 - e) Foam 67.0 - 82.0
4. **Heat Seal Coating**
 - a) Melting Point °F 150 - 160
 - b) Blocking Point °F 130 - 135
5. **Gas Transmission: cc/cin²/24hrs/1atm**
 - a) Oxygen nil
6. **Water Vapor Transmission**
 - a) gm/cin²/24hrs/100°F/90%RH Near zero

RECOMMENDED STORAGE CONDITIONS

The material should be stored in well-ventilated area (temp. 60° - 80°F; RH - 40% - 60%). Material and lined closures are heat sensitive. Storage or shipping temperatures should not be in excess of 105°F. Curling, blocking, splitting, or foil separation may result. If material becomes chilled, it should be stored under the recommended conditions until stabilized. Avoid storing closure liner materials over 60 days. Metal foil is prone to corrosion.

SUGGESTED PRODUCT USES

Material is an induction heat sealable tamper indicating innerseal which can be used for over-the-counter drug products on Polyethylene, Glass*, PET, PVC, Polystyrene, and Polypropylene.

Dry Products
Milk
Peroxide

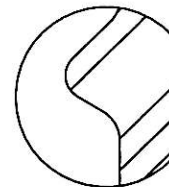
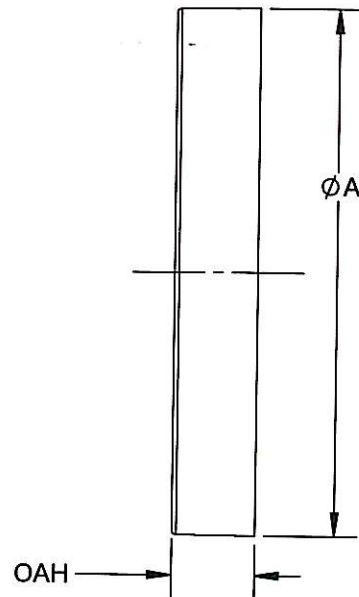
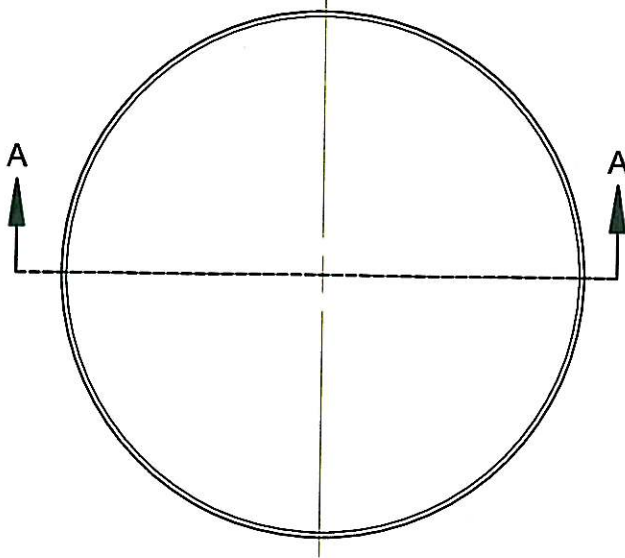
Fruit Juices
Glass Cleaner
Spices

Product applications listed above are a partial listing and do not cover all suitable applications. These are recommendations for general categories and user must test for suitability for their specific product. Not suitable for products containing oil.

**Glass must be treated for proper adhesion.*

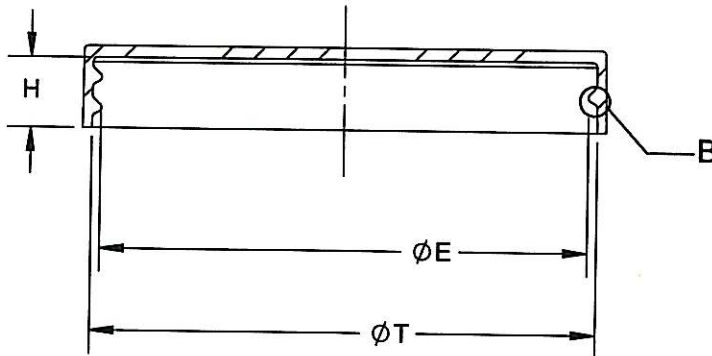
The technical information and suggestions for use made herein are based on SANCAP Liner research and experience and are believed to be reliable, but such information and suggestions do not constitute a warranty, and no patent liability can be assumed. Since SANCAP Liner has no control over the conditions under which the product is transported, stored, handled, used, or applied, buyer must determine for themselves, by preliminary tests or otherwise, the suitability of the product for their purposes. All products are sold subject to SANCAP Liner's written warranty, which is in lieu of all other warranties or merchantability and fitness for a particular purpose. SANCAP Liner's liability on any basis is limited to the price of the product used.

PRODUCT NAME: HS035 HEAT SEAL/20F
Rev. 042111



**DETAIL B
SCALE 6 : 1**

THREAD DETAIL INFORMATION
6 THREADS PER INCH, 0.1667 PITCH,



**SECTION A-A
SCALE 1 : 1**

	TOLERANCE	UNITS	
E	±0.015	in (mm)	2.650 (67.31)
T	±0.015	in (mm)	2.750 (69.85)
H	±0.015	in (mm)	.385 (9.78)
OAH	±0.015	in (mm)	.450 (11.43)
A	±0.015	in (mm)	2.850 (72.39)
Part Weight	±1.0	g	7.8

STATIC TORQUE RECOMMENDATION
28-50 In-lbs

THIS REQUIREMENT MAY VARY
DEPENDING UPON BOTTLE MATERIAL,
NECK FINISH, AND CAPPING EQUIPMENT

THE CLOSURE DIMENSIONS
DEPICTED ARE THOSE WHICH HAVE
GENERALLY BEEN FOUND TO BE FUNCTIONAL
BASED ON INDUSTRY EXPERIENCE BECAUSE
OF VARIABILITY IN GLASS AND PLASTIC
CONTAINER FINISHES, EACH CLOSURE/FINISH
SYSTEM SHOULD BE INDIVIDUALLY EVALUATED
AND TESTED TO ENSURE IT MEETS APPLICABLE
PERFORMANCE CRITERIA. SEE QUALITY
ASSURANCE SPECIFICATIONS FOR ADDITIONAL
INFORMATION.

MOLD-RITE, WEATHERCHEM AND STULL
TECHNOLOGIES RESERVES THE RIGHT TO
REVISE ANY OR ALL SPECIFICATIONS AND
REQUIREMENTS.

DRAWING TYPE : CUSTOMER

DIMENSIONS ENCLOSED IN () INDICATE REFERENCE
DIMENSIONS AND NO TOLERANCE LIMITS ARE ESTABLISHED
TOLERANCES UNLESS OTHERWISE SPECIFIED

DIMENSION (inches)	TOLERANCE	DIMENSION (mm)	TOLERANCE
0-0.787	±0.006	0-20	±0.152
0.788-1.161	±0.008	21-30	±0.203
1.182-2.756	±0.012	31-70	±0.305
2.757-3.937	±0.016	71-100	±0.406
3.938-5.096	±0.020	101-150	±0.508
5.097-7.874	±0.024	151-200	±0.610
7.875-9.843	±0.032	201-250	±0.813

ANGULAR TOLERANCE ± 2°

PROPRIETARY AND CONFIDENTIAL

THIS DRAWING IS PROTECTED BY COPYRIGHT AND CONTAINS INFORMATION
PROPRIETARY TO MOLD-RITE, WEATHERCHEM AND STULL TECHNOLOGIES.
ANY REPRODUCTION, DISCLOSURE, OR USE OF ITS CONTENTS OR ANY PART
THEREOF IS EXPRESSLY PROHIBITED EXCEPT AS MOLD-RITE, WEATHERCHEM
AND STULL TECHNOLOGIES OTHERWISE MAY AGREE IN WRITING

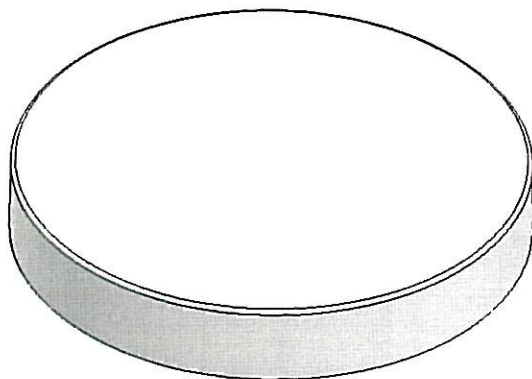
One Company - Unlimited Packaging Possibilities



EXPANDED PRODUCT OFFERINGS · MULTIPLE MANUFACTURING LOCATIONS
INDUSTRY LEADING INNOVATION · UNMATCHED CUSTOMER SERVICE

THIRD ANGLE PROJECTION 	DISTRIBUTION CODE D	DRAWING NAME S 70mm 400 CAP
DRAWN BY: J.R.	08/07/13	DRAWING NUMBER C-1015-S
QA APPR: -	-	MATERIAL POLYPROPYLENE
CUSTOMER APPR:		MODEL NUMBER: C-1015-HL 70mm-400
		SCALE 1:1 SHEET SIZE 8 1/2 x 11 SHEET 1 of 2 REV 01 N/P AA

AVAILABLE OPTIONS



REVISION HISTORY

REV	N/P	DATE	REVISION	DE
01	AA	12/02/13	REDRAWN ON NEW FORMATS	J.R.

THE CLOSURE DIMENSIONS DEPICTED ARE THOSE WHICH HAVE GENERALLY BEEN FOUND TO BE FUNCTIONAL BASED ON INDUSTRY EXPERIENCE BECAUSE OF VARIABILITY IN GLASS AND PLASTIC CONTAINER FINISHES, EACH CLOSURE/FINISH SYSTEM SHOULD BE INDIVIDUALLY EVALUATED AND TESTED TO ENSURE IT MEETS APPLICABLE PERFORMANCE CRITERIA. SEE QUALITY ASSURANCE SPECIFICATIONS FOR ADDITIONAL INFORMATION.

MOLD-RITE, WEATHERCHEM AND STULL TECHNOLOGIES RESERVES THE RIGHT TO REVISE ANY OR ALL SPECIFICATIONS AND REQUIREMENTS.

DRAWING TYPE : CUSTOMER

DIMENSIONS ENCLOSED IN () INDICATE REFERENCE DIMENSIONS AND NO TOLERANCE LIMITS ARE ESTABLISHED

TOLERANCES UNLESS OTHERWISE SPECIFIED

DIMENSION (Inches)	TOLERANCE	DIMENSION (mm)	TOLERANCE
0-0.787	±0.006	0-20	±0.152
0.788-1.181	±0.008	21-30	±0.203
1.182-2.756	±0.012	31-70	±0.305
2.757-3.937	±0.016	71-100	±0.406
3.938-5.096	±0.020	101-150	±0.508
5.097-7.874	±0.024	151-200	±0.610
7.875-9.843	±0.032	201-250	±0.813

ANGULAR TOLERANCE ± 2°

PROPRIETARY AND CONFIDENTIAL

THIS DRAWING IS PROTECTED BY COPYRIGHT AND CONTAINS INFORMATION PROPRIETARY TO MOLD-RITE, WEATHERCHEM AND STULL TECHNOLOGIES. ANY REPRODUCTION, DISCLOSURE, OR USE OF ITS CONTENTS OR ANY PART THEREOF IS EXPRESSLY PROHIBITED EXCEPT AS MOLD-RITE, WEATHERCHEM AND STULL TECHNOLOGIES OTHERWISE MAY AGREE IN WRITING.

One Company - Unlimited Packaging Possibilities



EXPANDED PRODUCT OFFERINGS · MULTIPLE MANUFACTURING LOCATIONS
INDUSTRY LEADING INNOVATION · UNMATCHED CUSTOMER SERVICE

THIRD ANGLE PROJECTION



SOLIDWORKS

DISTRIBUTION CODE

D

DRAWING NAME

S 70mm
400 CAP

DRAWING NUMBER

C-1015-S

MATERIAL

POLYPROPYLENE

DRAWN BY: REFER TO PAGE 1

QA APPR: REFER TO PAGE 1

CUSTOMER APPR: REFER TO PAGE 1

SCALE	SHEET SIZE	SHEET	REV	N/P
1:1	8½ x 11	2 of 2	01	AA