



FPT300F

Homopolymer Polypropylene

- Good Mold Release, Excellent Part Finish (Low Bloom)
- Suggested Uses Include Housewares, Caps and Closures, Mugs / Cups, Thin-Walled Containers

Property	Units	Typical Value	Test Method
Nominal Melt Flow Rate (230°C/2.16kg)	g/10 min	30	ASTM D1238
Tensile Strength at Yield (2 in/min, 50 mm/min)	psi MPa	4,800 33	ASTM D638
Elongation at Yield (2 in/min, 50 mm/min)	%	10	ASTM D638
Flexural Modulus (0.05 in/min, 1.3 mm/min, 1% secant)	psi MPa	200,000 1,379	ASTM D790A
Notched Izod Impact Strength at 23°C	ft-lbs/in J/m	0.7 37	ASTM D256A
Rockwell Hardness	R	104	ASTM D785

Information contained herein is considered accurate to our best knowledge. It is offered for your consideration and investigation, and is not to be construed as a representation or warranty, expressed or implied, for which Braskem assumes legal responsibility. Our warranties are limited to those expressly stated in formal contracts or in conditions of sale on our invoices and order acceptances. Conditions and methods of use vary and are beyond the control of Braskem. Braskem, therefore, disclaims any liability incurred as a result of the use of its products in accordance with the data contained herein. No information herein shall be construed as an offer of indemnity for infringement or as a recommendation to use these products in such a manner as to infringe any patent, domestic or foreign.

For cautions and other information relating to handling of
and exposure to this product, please see material safety
data sheet code number C4001 published by Braskem.

550 Technology Drive
Pittsburgh, PA 15219
1-800-223-8871

Revision Date: Monday,
March 23, 2009
www.braskem.com

MOLD-RITE PLASTICS LLC.
1 Plant Street P.O. Box 160
Plattsburgh NY 12901
(518)561-1812
<https://www.mrpcap.com>



Product Data Sheet

MRPWH01 White

Product Description

This specification designated by Mold-Rite Plastics covers all colorants that meet the typical value data listed below.

Regulatory Compliance

FDA – Title 21 CFR Section 170-199 for Food & Drug Contact

RoHS Compliant

CONEG/Heavy Metal Compliant

Proposition 65 Compliant

Typical Properties	Typical Value
Density	.90
Melt Index	30
Pellets	Standard
Recommended Let Down Ratio	50:1
Carrier Resin	PP
Estimated Heat Stability	450-500 °F
Visual Evaluation	Excellent
Additives	None
DE Tolerance	< 2.00

For further regulatory information, contact Mold-Rite Plastics customer service or sales department.

Notes: These are typical properties not to be construed as specifications. Mold-Rite Plastics reserves that right to include any other colorant that meets that above data values and regulatory requirements.

This product data sheet covers multiple colorant formulations that meet the above typical data values and regulatory requirements. All listed formulas have similar physical, chemical and processing properties. Listed known formulas; Polymer Concentrates – 10536, Penn Color 60W5221

All results were obtained from manufacturer product data sheets (where applicable). The data are intended as a general guide only and do not necessarily represent results that may be obtained elsewhere. The use of Mold-Rite Plastics products must be guided by the users own methods for selection of proper formulation. Mold-Rite Plastics disclaims any responsibility for misuse or miss application of its products. Mold-Rite Plastics liability and customer's exclusive remedy for any claims arising out of sales of its products are expressly limited at customer option for replacement not to exceed the purchase price plus transportation charges thereon in respect to any material which damage is claimed.



PRODUCT DATA SHEET

HS035 N/20 LD Foam

MRP Description -

(21N)HS035N/20LD.020 FOAM PRT R SFYP

PRODUCT DESCRIPTION

Description: A paper-backed aluminum foil coated with a clear heat sealable coating blend of high molecular weight ethylene and vinyl acetate copolymers on the foil, laminated to low dense polystyrene foam.

FDA Status: Complies with Federal Regulations of H.E.W., FDA, Sections 175.105, 175.300, 176.170, 176.180, 177.1350, 177.1640, 178.3010, 178.3710, and 182.1.

PHYSICAL AND CHEMICAL PROPERTIES

- | | |
|---|----------------|
| 1. Color | Aluminum |
| 2. Thickness, mils | |
| (a) Overall | 21.22 - 27.11 |
| (b) Heat Seal | 1.50 - 3.0 |
| (c) Aluminum | 0.31 - 0.38 |
| (d) Paper (N) | 1.41 - 1.73 |
| (e) Polystyrene Foam | 18.00 - 22.00 |
| 3. Basis Wt. Lbs./Ream 3000 ft² | |
| (a) Overall | 94.44 - 141.51 |
| (b) Heat Seal | 20.7 - 41.9 |
| (c) Aluminum | 13.3 - 16.2 |
| (d) Paper (N) | 20.79 - 21.21 |
| (e) Polystyrene Foam | 39.65 - 62.20 |
| 4. Heat Seal Coating | |
| (a) Melting Point °F | 150 - 160 |
| (b) Blocking Point °F | 130 - 135 |
| 5. Gas Transmission: cc/cin²/24hrs/1atm | |
| (a) Oxygen | near zero |
| 6. Water Vapor Transmission | |
| a) gm/cin ² /24 hrs/100° F/90% RH | near zero |

RECOMMENDED STORAGE CONDITIONS

The material should be stored in well ventilated area (temp. 60° - 80°F.; RH - 40% - 60%). Material and lined closures are heat sensitive. Storage or shipping temperatures should not be in excess of 105°F. Curling, blocking, splitting or foil separation may result. If material becomes chilled, it should be stored under the recommended conditions until stabilized. Avoid storing closure liner materials over 60 days. Metal foil is prone to corrosion.

SUGGESTED PRODUCT USES

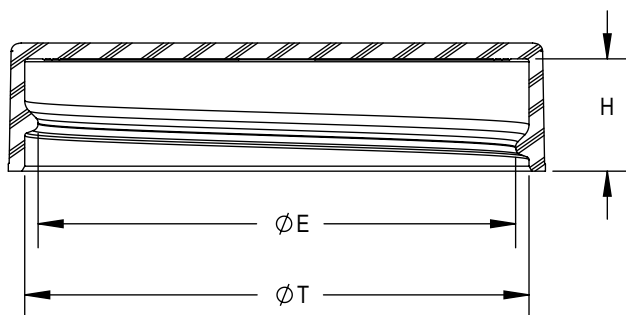
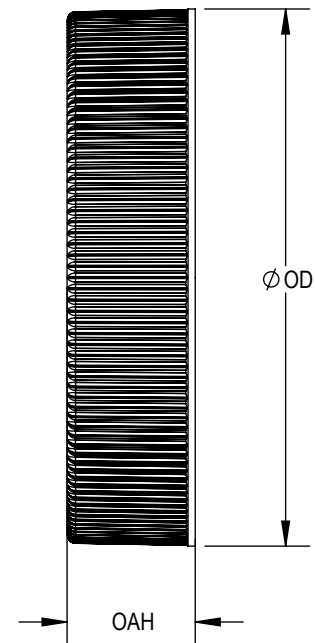
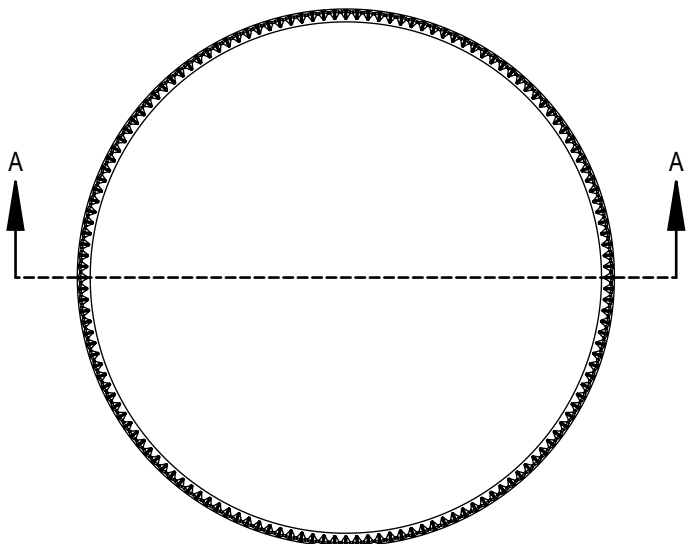
Material is a heat sealable tamper indicating innerseal which can be used for over-the-counter drug products on Polyethylene, Glass, PET, PVC, Polystyrene and Polypropylene.

Dry Products

Product applications listed above are a partial listing and do not cover all suitable applications. These are recommendations for general categories and user must test for suitability for his specific product. Not suitable for products containing oil.

The technical information and suggestions for use made herein are based on SANCAP research and experience and are believed to be reliable, but such information and suggestions do not constitute a warranty, and no patent liability can be assumed. Since SANCAP has no control over the conditions under which the product is transported, stored, handled, used or applied, buyer must determine for himself, by preliminary tests or otherwise, the suitability of the product for his purposes. All products are sold subject to SANCAP'S written warranty, which is in lieu of all other warranties or merchantability and fitness for a particular purpose. SANCAP'S liability on any basis is limited to the price of the product used.

file:HS035N/20 LDF
01/11/05



SECTION A-A

THREAD DETAIL INFORMATION:
6 THREADS PER INCH, 0.167" PITCH

REFERENCE	TOLERANCE	UNITS	DIMENSION
E	± 0.010 [0.25]	in [mm]	1.656 [42.06]
T	± 0.010 [0.25]	in [mm]	1.752 [44.50]
H	± 0.010 [0.25]	in [mm]	0.390 [9.91]
OD	± 0.012 [0.30]	in [mm]	1.865 [47.37]
OAH	± 0.010 [0.25]	in [mm]	0.445 [11.30]
PART WEIGHT	± 0.50	g	3.90

STATIC TORQUE RECOMMENDATION
17-27 in-lbs
THIS REQUIREMENT MAY VARY DEPENDING
UPON BOTTLE MATERIAL, NECK FINISH, AND
CAPPING EQUIPMENT

DRAWING TYPE : CUSTOMER

REPLACES DRAWINGS:
C-3010

DIMENSIONS ENCLOSED IN ()
INDICATE REFERENCE
DIMENSIONS AND NO TOLERANCE
LIMITS ARE ESTABLISHED

TOLERANCES UNLESS OTHERWISE SPECIFIED

DIMENSION (inches)	TOLERANCE	DIMENSION (mm)	TOLERANCE
0-0.787	± 0.006	0-20	± 0.152
0.788-1.181	± 0.008	21-30	± 0.203
1.182-2.756	± 0.012	31-70	± 0.305
2.757-3.937	± 0.016	71-100	± 0.406
3.938-5.096	± 0.020	101-150	± 0.508
5.097-7.874	± 0.024	151-200	± 0.610
7.875-9.843	± 0.032	201-250	± 0.813

ANGULAR TOLERANCE $\pm 2^\circ$

PROPRIETARY AND CONFIDENTIAL

THIS DRAWING IS PROTECTED BY COPYRIGHT AND CONTAINS INFORMATION
PROPRIETARY TO MOLD-RITE, WEATHERCHEM AND STULL TECHNOLOGIES.
ANY REPRODUCTION, DISCLOSURE, OR USE OF ITS CONTENTS OR ANY PART
THEREOF IS EXPRESSLY PROHIBITED EXCEPT AS MOLD-RITE, WEATHERCHEM
AND STULL TECHNOLOGIES OTHERWISE MAY AGREE IN WRITING



DRAWN BY.

JDM

6/3/2016

ENG APPR.

BDG

8/17/2017

QA APPR.

REL

09/05/2017

DISTRIBUTION
CODE

D

DRAWING NAME

45-400 CT CLOSURE
RS (Ribbed Side - Smooth Top)

DRAWING NUMBER

CQA - 10301

MATERIAL

POLYPROPYLENE

MODEL NUMBER:

PM 10297 45-400 CT

SCALE

1:1

SHEET SIZE

8.5in*11in

SHEET

1 of 3

REV.NP

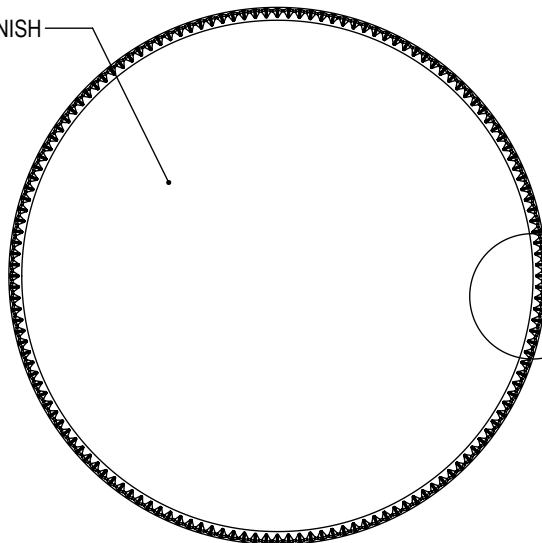
00.AC

THE CLOSURE DIMENSIONS
DEPICTED ARE THOSE WHICH HAVE GENERALLY BEEN
FOUND TO BE FUNCTIONAL BASED ON INDUSTRY
EXPERIENCE BECAUSE OF VARIABILITY IN GLASS AND
PLASTIC CONTAINER FINISHES, EACH CLOSURE/FINISH
SYSTEM SHOULD BE INDIVIDUALLY EVALUATED AND
TESTED TO ENSURE IT MEETS APPLICABLE
PERFORMANCE CRITERIA. SEE QUALITY ASSURANCE
SPECIFICATIONS FOR ADDITIONAL INFORMATION.

MOLD-RITE, WEATHERCHEM AND STULL TECHNOLOGIES
RESERVES THE RIGHT TO REVISE ANY OR ALL
SPECIFICATIONS AND REQUIREMENTS.

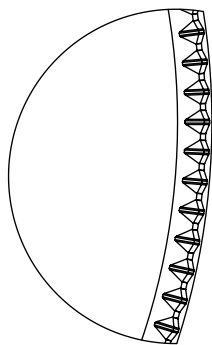
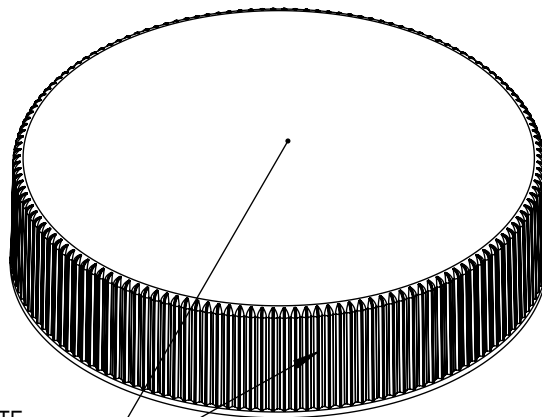
REVISIONS						
DATE	REV.	N/P	PRODUCT DRAWING REQUEST	DESCRIPTION	ENG	DRW
6/3/2016	00	AA	PDR 16-025	UPDATE DRAWING FORMAT, REFER TO C-3010 FOR REVISION HISTORY	JDM	JDM
5/5/2017	00	AB		ADDED GATE LOCATION OPTION	JDM	JDM
7/27/17	00	AC	PDR 17-035	UPDATED OD TOLERANCE, T DIMENSION AND PART WEIGHT BASED ON HISTORICAL DATA	BDG	DAS

SMOOTH FINISH



RIBS

OPTIONAL GATE LOCATIONS
(SEE TABLE BELOW)



152 EQUALLY SPACED RIBS
DETAIL RIBS
SCALE 4 : 1

MOLD NUMBER	GATE LOCATION
45001	SIDE
45002	SIDE
45003	SIDE
45005	SIDE
45007	SIDE
45011	TOP CENTER

DRAWING TYPE : CUSTOMER

REFERENCES:

45001, 45002, 45003, 45005,
45007, 45011

DIMENSIONS ENCLOSED IN ()
INDICATE REFERENCE
DIMENSIONS AND NO TOLERANCE
LIMITS ARE ESTABLISHED

TOLERANCES UNLESS OTHERWISE SPECIFIED

DIMENSION (inches)	TOLERANCE	DIMENSION (mm)	TOLERANCE
0-0.787	±0.006	0-20	±0.152
0.788-1.181	±0.008	21-30	±0.203
1.182-2.756	±0.012	31-70	±0.305
2.757-3.937	±0.016	71-100	±0.406
3.938-5.096	±0.020	101-150	±0.508
5.097-7.874	±0.024	151-200	±0.610
7.875-9.843	±0.032	201-250	±0.813

ANGULAR TOLERANCE ± 2°

PROPRIETARY AND CONFIDENTIAL

THIS DRAWING IS PROTECTED BY COPYRIGHT AND CONTAINS INFORMATION PROPRIETARY TO MOLD-RITE, WEATHERCHEM AND STULL TECHNOLOGIES. ANY REPRODUCTION, DISCLOSURE, OR USE OF ITS CONTENTS OR ANY PART THEREOF IS EXPRESSLY PROHIBITED EXCEPT AS MOLD-RITE, WEATHERCHEM AND STULL TECHNOLOGIES OTHERWISE MAY AGREE IN WRITING

MRP
MOLD-RITE PLASTICS®
Innovative • Reliable • Responsive



DRAWN BY: JDM

DISTRIBUTION CODE
D

6/3/2016

DRAWING NAME

45-400 CT CLOSURE
RS (Ribbed Side - Smooth Top)

DRAWING NUMBER

CQA - 10301

MATERIAL

POLYPROPYLENE

MODEL NUMBER:

PM 10297 45-400 CT

SCALE

1:1

SHEET SIZE

SHEET

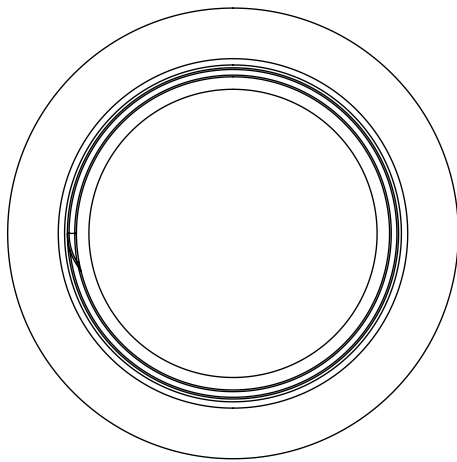
2 of 3

REV.NP

00.AC

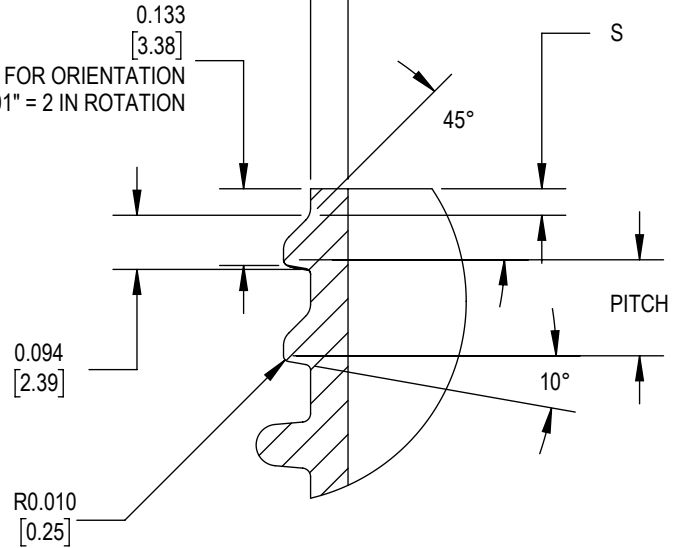
THE CLOSURE DIMENSIONS DEPICTED ARE THOSE WHICH HAVE GENERALLY BEEN FOUND TO BE FUNCTIONAL BASED ON INDUSTRY EXPERIENCE BECAUSE OF VARIABILITY IN GLASS AND PLASTIC CONTAINER FINISHES. EACH CLOSURE/FINISH SYSTEM SHOULD BE INDIVIDUALLY EVALUATED AND TESTED TO ENSURE IT MEETS APPLICABLE PERFORMANCE CRITERIA. SEE QUALITY ASSURANCE SPECIFICATIONS FOR ADDITIONAL INFORMATION.

MOLD-RITE, WEATHERCHEM AND STULL TECHNOLOGIES RESERVES THE RIGHT TO REVISE ANY OR ALL SPECIFICATIONS AND REQUIREMENTS.

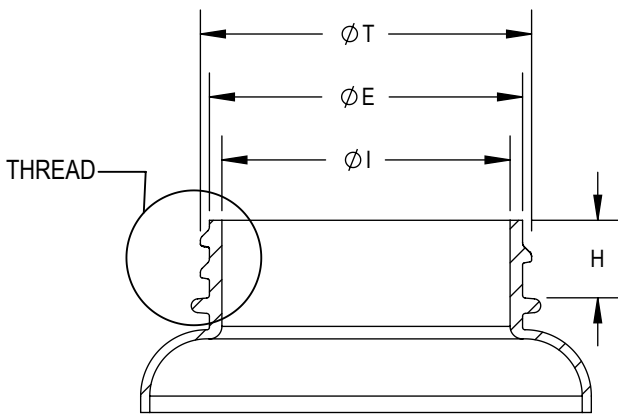


MINIMUM NECK LANDING
OF 0.050"

S' - CRITICAL FOR ORIENTATION
0.001" = 2 IN ROTATION



DETAIL THREAD
SCALE 3 : 1



SECTION C-C
SCALE 1 : 1

REFERENCE	TOLERANCE	UNITS	DIMENSION
E	± 0.017 [0.43]	in [mm]	1.631 [41.43]
T	± 0.017 [0.43]	in [mm]	1.725 [43.82]
I	MINIMUM	in [mm]	1.525 [38.74]
S	± 0.015 [0.38]	in [mm]	0.046 [1.17]
H	± 0.015 [0.38]	in [mm]	0.415 [10.54]
TPI			6
PITCH		in [mm]	0.167 [4.24]

NOTE: THE NOMINAL ORIENTATION ILLUSTRATED IS BASED ON NOMINAL DIMENSIONS OF BOTH THE CLOSURE AND THE RECOMMENDED NECK FINISH. FOR EXACT ORIENTATION EACH BOTTLE SHOULD BE EVALUATED ON A CASE BY CASE BASIS.

DRAWING TYPE : CUSTOMER

DIMENSIONS ENCLOSED IN () INDICATE REFERENCE DIMENSIONS AND NO TOLERANCE LIMITS ARE ESTABLISHED

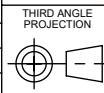
TOLERANCES UNLESS OTHERWISE SPECIFIED

DIMENSION (inches)	TOLERANCE	DIMENSION (mm)	TOLERANCE
0-0.787	±0.006	0-20	±0.152
0.788-1.181	±0.008	21-30	±0.203
1.182-2.756	±0.012	31-70	±0.305
2.757-3.937	±0.016	71-100	±0.406
3.938-5.096	±0.020	101-150	±0.508
5.097-7.874	±0.024	151-200	±0.610
7.875-9.843	±0.032	201-250	±0.813

ANGULAR TOLERANCE ± 2°

PROPRIETARY AND CONFIDENTIAL

THIS DRAWING IS PROTECTED BY COPYRIGHT AND CONTAINS INFORMATION PROPRIETARY TO MOLD-RITE, WEATHERCHEM AND STULL TECHNOLOGIES. ANY REPRODUCTION, DISCLOSURE, OR USE OF ITS CONTENTS OR ANY PART THEREOF IS EXPRESSLY PROHIBITED EXCEPT AS MOLD-RITE, WEATHERCHEM AND STULL TECHNOLOGIES OTHERWISE MAY AGREE IN WRITING



SOLIDWORKS

DISTRIBUTION
CODE

D

DRAWING NAME

45-400 CT CLOSURE
RECOMMENDED NECK FINISH

DRAWING NUMBER

CQA - 10301

DRAWN BY.

JDM

6/3/2016

MATERIAL

ENG APPR.

BDG

8/17/2017

MODEL NUMBER:

QA APPR.

REL

09/05/2017

SCALE

1:2

SHEET SIZE

8.5 X 11

SHEET

3 of 3

REV/N/P

00.AC