



Freshness and Protection for Today's Packaging

# FoilSeal™ Technical Data Sheet

## .020" PS Foam FS 5-4

Revision: FS54-09222014

MRP Description - (54F)FS5-4.020 FOAM R SFYP

<b>Product</b>	.020" PS Foam FS 5-4																	
<b>Scope</b>	One piece foam backed heat induction foil innerseal which combines ease of removal with tamper-evident properties. It is suggested for sealing to PE, PP, PET, PVC, PS and properly treated glass containers. This material will vent gas through the paper layer and is suggested for use on dry products only.																	
<b>Composition</b>	<table border="1"> <thead> <tr> <th>Material</th> <th>Standard</th> <th>Metric</th> </tr> </thead> <tbody> <tr> <td>Backing</td> <td>.020"</td> <td>.508 mm</td> </tr> <tr> <td>Foil</td> <td>.001"</td> <td>.0254 mm</td> </tr> <tr> <td>Paper</td> <td>.002"</td> <td>.0508 mm</td> </tr> <tr> <td>Heat Seal</td> <td>.0015"</td> <td>.0381 mm</td> </tr> </tbody> </table>	Material	Standard	Metric	Backing	.020"	.508 mm	Foil	.001"	.0254 mm	Paper	.002"	.0508 mm	Heat Seal	.0015"	.0381 mm		
Material	Standard	Metric																
Backing	.020"	.508 mm																
Foil	.001"	.0254 mm																
Paper	.002"	.0508 mm																
Heat Seal	.0015"	.0381 mm																
Adhesive or resin bonding layers not shown.																		
<b>FDA Status:</b> 21 CFR 177.1210	<b>Recommended Storage and Handling:</b> Refer to Website.																	
<b>Drug Master File (DMF):</b> #4544	<b>EU / EP Reg.:</b> Does not meet Article 3a of Reg. No. 2023/2006 and Article 3 of Reg. No. 1935/2004.																	
<b>GTR Oxygen:</b> 77.0 cc Oxygen/100 IN2 * 24hrs. @ 100° F, ASTM F-2622-08	<b>MVTR:</b> 0.371 gm water/100IN2 * 24 hrs. @ 75° F, ASTM F-1249																	
<b>Sealing to glass containers:</b> Selig can not guarantee the performance or seal integrity of this materials when applied to any glass (treated or untreated) container. We suggest you contact your glass supplier for recommendations on glass treatments that may or may not improve performance or seal integrity.																		
<b>Print Location (if any):</b> Foil Layer and/or Heat Seal Layer																		

Selig materials are compliant with current USFDA Food allergen Guidelines.

Selig materials are compliant with California Proposition 65 labeling requirements.

Selig materials are compliant with limitation of heavy metals in packaging per CONEG & EU 94/62/EC, article 11.

Recommended for use with dry food products. Is not suitable for use with fatty or alcoholic food types per ECC Reg. № 10/2011. Determining specific organoleptic compatibility per Article 3a of ECC Reg. № 2023/2006 is the responsibility of the food packager.

MSDS's are not required as Selig is not a chemical manufacturer or distributor and our products are 'articles' intended for food packaging per 29 CFR 1910.1200 (HazCom).

The information contained within this product data bulletin is to be used as a general guide in determining which structures are offered for sealing to specific container materials. All of the information which we provide is reliable to the best of our knowledge, but the accuracy thereof is not guaranteed. We suggest that consumers determine suitability for their own application.

www.seligsealing.com

Corporate Headquarters  
Selig Sealing Products, Inc.  
342 E Wabash St  
Forrest, IL 61741, USA  
Phone: +1 (815) 785-2100  
Fax: +1 (815) 657-7584

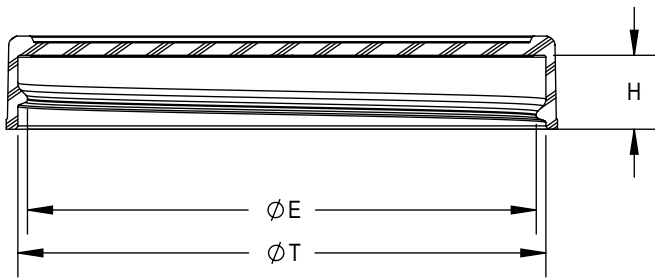
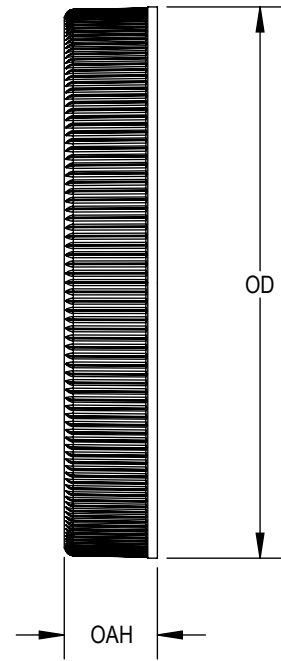
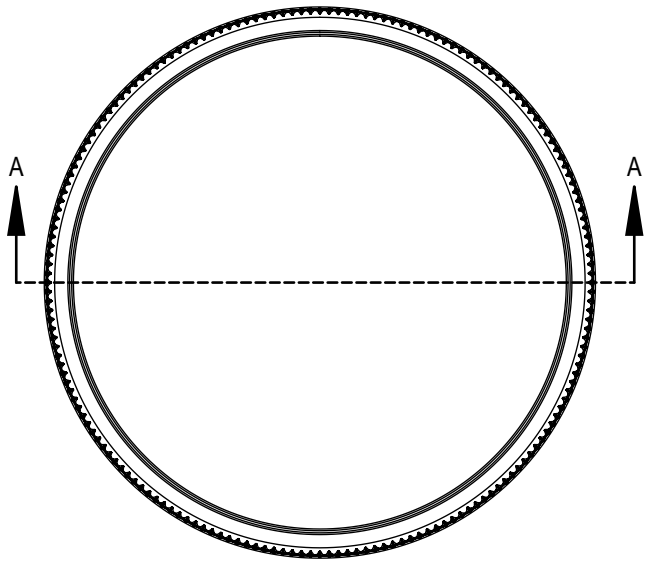
North American Sales  
Selig Sealing Products, Inc.  
184 Shuman Blvd., Suite 310  
Naperville, IL 60563, USA  
Phone: +1 (630) 922-3158  
Fax: +1 (630) 922-8469

European Sales and Manufacturing  
Selig UK, LTD 635-637 Ajax Avenue  
Slough Trading Estate  
Slough Berkshire SL14BH UK  
Phone: +44 (0) 1753 773 000  
Fax: +44 (0) 1753 773 111

Canadian Manufacturing  
Selig Canada, ULC  
145 Edward Street  
Aurora, Ontario Canada, L4G 1W3  
Phone: +1 (905) 727-0114  
Fax: +1 (905) 727-8544

Swiss Manufacturing  
Selig Switzerland LTD  
Bahnhofstrasse 11  
CH-8172 Niederglatt  
Phone: +41 (0) 44 851 50 50  
Fax: +41 (0) 44 851 50 51





SECTION A-A

**THREAD DETAIL:**  
6 THREADS PER INCH, 0.167" PITCH

REFERENCE	TOLERANCE	UNITS	DIMENSION
E	±0.015 [0.38]	in [mm]	2.650 [67.31]
T	±0.020 [0.51]	in [mm]	2.750 [69.85]
H	±0.015 [0.38]	in [mm]	0.392 [9.96]
OAH	±0.020 [0.51]	in [mm]	0.483 [12.26]
OD	±0.025 [0.64]	in [mm]	2.875 [73.03]
PART WEIGHT	± 1.5	g	8.7

**STATIC TORQUE RECOMMENDATION**  
28-50 in-lbs  
THIS REQUIREMENT MAY VARY DEPENDING UPON BOTTLE MATERIAL, NECK FINISH, AND CAPPING EQUIPMENT

DRAWING TYPE : CUSTOMER

REPLACES DRAWINGS:  
C-4015

DIMENSIONS ENCLOSED IN ( )  
INDICATE REFERENCE  
DIMENSIONS AND NO TOLERANCE  
LIMITS ARE ESTABLISHED

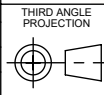
TOLERANCES UNLESS OTHERWISE SPECIFIED

DIMENSION (inches)	TOLERANCE	DIMENSION (mm)	TOLERANCE
0-0.787	±0.006	0-20	±0.152
0.788-1.181	±0.008	21-30	±0.203
1.182-2.756	±0.012	31-70	±0.305
2.757-3.937	±0.016	71-100	±0.406
3.938-5.096	±0.020	101-150	±0.508
5.097-7.874	±0.024	151-200	±0.610
7.875-9.843	±0.032	201-250	±0.813

ANGULAR TOLERANCE ± 2°

PROPRIETARY AND CONFIDENTIAL

THIS DRAWING IS PROTECTED BY COPYRIGHT AND CONTAINS INFORMATION PROPRIETARY TO MOLD-RITE, WEATHERCHEM AND STULL TECHNOLOGIES. ANY REPRODUCTION, DISCLOSURE, OR USE OF ITS CONTENTS OR ANY PART THEREOF IS EXPRESSLY PROHIBITED EXCEPT AS MOLD-RITE, WEATHERCHEM AND STULL TECHNOLOGIES OTHERWISE MAY AGREE IN WRITING



DISTRIBUTION CODE  
**D**

DRAWING NAME  
**70-400 CT CLOSURE**  
RM (Ribbed Side - Matte Top)

DRAWING NUMBER  
**CQA - 10728**

MATERIAL  
**POLYPROPYLENE**

MODEL NUMBER:  
**PM 11104 70-400 CT**

DRAWN BY: DAS 6/3/2016

ENG APPR: BDG 4/6/2018

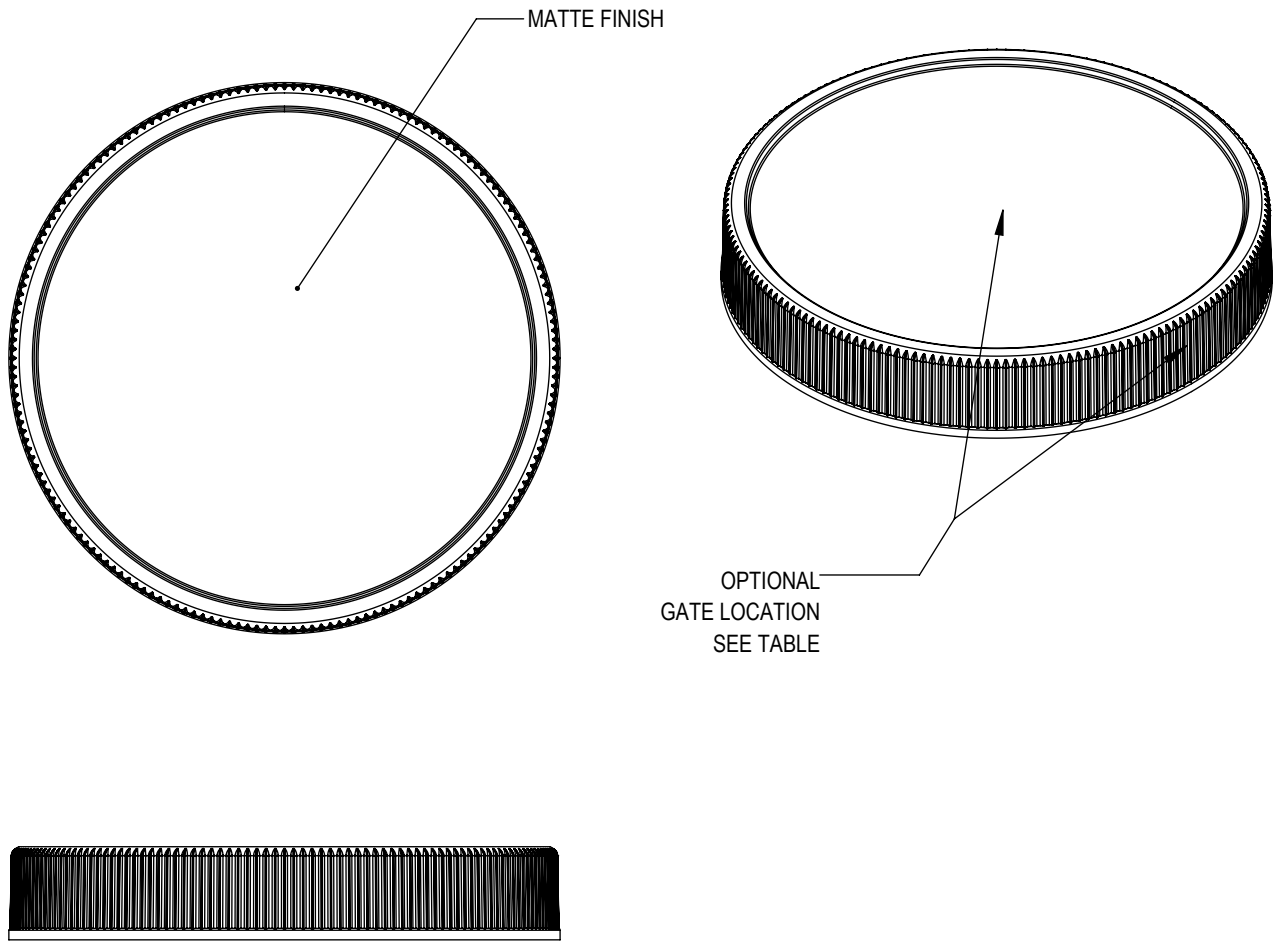
QA APPR: REL 08/13/2018

SCALE	SHEET SIZE	SHEET	REV NP
1:1	8.5" X 11"	1 of 3	00.AA

THE CLOSURE DIMENSIONS DEPICTED ARE THOSE WHICH HAVE GENERALLY BEEN FOUND TO BE FUNCTIONAL BASED ON INDUSTRY EXPERIENCE BECAUSE OF VARIABILITY IN GLASS AND PLASTIC CONTAINER FINISHES, EACH CLOSURE/FINISH SYSTEM SHOULD BE INDIVIDUALLY EVALUATED AND TESTED TO ENSURE IT MEETS APPLICABLE PERFORMANCE CRITERIA. SEE QUALITY ASSURANCE SPECIFICATIONS FOR ADDITIONAL INFORMATION.

MOLD-RITE, WEATHERCHEM AND STULL TECHNOLOGIES RESERVES THE RIGHT TO REVISE ANY OR ALL SPECIFICATIONS AND REQUIREMENTS.

REVISIONS						
DATE	REV.	N/P	PRODUCT DRAWING REQUEST	DESCRIPTION	ENG	DRW
01/19/2018	00	AA	PDR 18-067	UPDATED FORMAT AND ASSIGNED NEW PART NUMBER. DIMENSIONAL SPECIFICATIONS UPDATED BASED ON PRODUCTION CAPABILITY. NO STEEL CHANGES OCCURED.	BDG	DAS



MOLD NUMBER	GATE LOCATION	
	SIDE	TOP
70003	X	
70007	X	
70008		X

THE CLOSURE DIMENSIONS DEPICTED ARE THOSE WHICH HAVE GENERALLY BEEN FOUND TO BE FUNCTIONAL BASED ON INDUSTRY EXPERIENCE BECAUSE OF VARIABILITY IN GLASS AND PLASTIC CONTAINER FINISHES. EACH CLOSURE/FINISH SYSTEM SHOULD BE INDIVIDUALLY EVALUATED AND TESTED TO ENSURE IT MEETS APPLICABLE PERFORMANCE CRITERIA. SEE QUALITY ASSURANCE SPECIFICATIONS FOR ADDITIONAL INFORMATION.

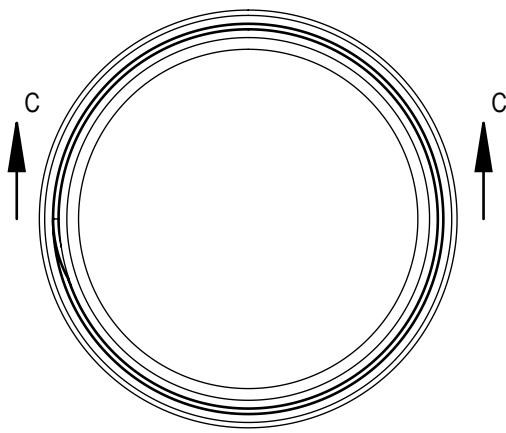
MOLD-RITE, WEATHERCHEM AND STULL TECHNOLOGIES RESERVES THE RIGHT TO REVISE ANY OR ALL SPECIFICATIONS AND REQUIREMENTS.

DRAWING TYPE : CUSTOMER

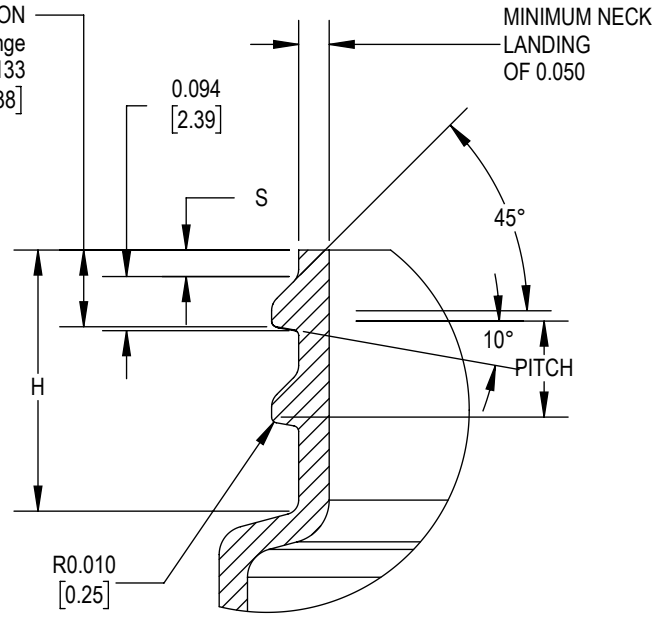
REFERENCES:		DIMENSIONS ENCLOSED IN ( )	
70003		INDICATE REFERENCE	
70007		DIMENSIONS AND NO TOLERANCE	
70008		LIMITS ARE ESTABLISHED	
TOLERANCES UNLESS OTHERWISE SPECIFIED			
DIMENSION (inches)	TOLERANCE	DIMENSION (mm)	TOLERANCE
0-0.787	±0.006	0-20	±0.152
0.788-1.181	±0.008	21-30	±0.203
1.182-2.756	±0.012	31-70	±0.305
2.757-3.937	±0.016	71-100	±0.406
3.938-5.096	±0.020	101-150	±0.508
5.097-7.874	±0.024	151-200	±0.610
7.875-9.843	±0.032	201-250	±0.813
ANGULAR TOLERANCE ± 2°			
PROPRIETARY AND CONFIDENTIAL			
THIS DRAWING IS PROTECTED BY COPYRIGHT AND CONTAINS INFORMATION PROPRIETARY TO MOLD-RITE, WEATHERCHEM AND STULL TECHNOLOGIES. ANY REPRODUCTION, DISCLOSURE, OR USE OF ITS CONTENTS OR ANY PART THEREOF IS EXPRESSLY PROHIBITED EXCEPT AS MOLD-RITE, WEATHERCHEM AND STULL TECHNOLOGIES OTHERWISE MAY AGREE IN WRITING			

**MOLD-RITE PLASTICS®**  
Innovative • Reliable • Responsive

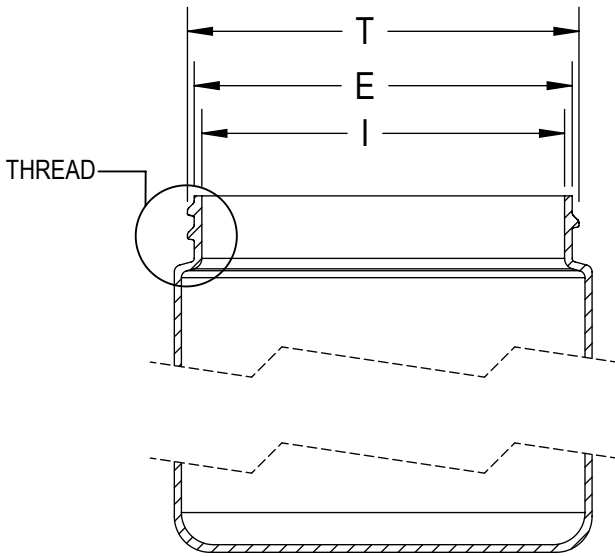
 THIRD ANGLE PROJECTION	DISTRIBUTION CODE <b>D</b>	DRAWING NAME <b>70-400 CT CLOSURE</b> RM (Ribbed Side - Matte Top)	
		DRAWING NUMBER <b>CQA - 10728</b>	
DRAWN BY: DAS	6/3/2016	MATERIAL: POLYPROPYLENE	
ENG APPR: BDG	4/6/2018	MODEL NUMBER: PM 11104 70-400 CT	
QA APPR: REL	08/13/2018	SCALE: 1:1	SHEET SIZE: 8.5 X 11 SHEET: 2 of 3 REV.NP: 00.AA



CRITICAL FOR ORIENTATION  
 .001" = 2 Degrees in Change  
 S' 0.133  
 [3.38]



DETAIL THREAD  
 SCALE 3 : 1



SECTION C-C

REFERENCE	TOLERANCE	UNITS	DIMENSION
E	±0.017 [0.43]	in [mm]	2.625 [66.68]
T	±0.017 [0.43]	in [mm]	2.719 [69.06]
I	MIN	in [mm]	2.232 [56.69]
S	±0.015 [0.38]	in [mm]	0.046 [1.17]
H	MIN	in [mm]	0.408 [10.36]
TPI			6
PITCH		in [mm]	0.167 [4.24]

NOTE: THE NOMINAL ORIENTATION ILLUSTRATED IS BASED ON NOMINAL DIMENSIONS OF BOTH THE CLOSURE AND THE RECOMMENDED NECK FINISH. FOR EXACT ORIENTATION EACH BOTTLE SHOULD BE EVALUATED ON A CASE BY CASE BASIS.

DRAWING TYPE : CUSTOMER

DIMENSIONS ENCLOSED IN ( ) INDICATE REFERENCE DIMENSIONS AND NO TOLERANCE LIMITS ARE ESTABLISHED

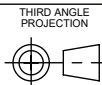
TOLERANCES UNLESS OTHERWISE SPECIFIED

DIMENSION (inches)	TOLERANCE	DIMENSION (mm)	TOLERANCE
0-0.787	±0.006	0-20	±0.152
0.788-1.181	±0.008	21-30	±0.203
1.182-2.756	±0.012	31-70	±0.305
2.757-3.937	±0.016	71-100	±0.406
3.938-5.096	±0.020	101-150	±0.508
5.097-7.874	±0.024	151-200	±0.610
7.875-9.843	±0.032	201-250	±0.813

ANGULAR TOLERANCE ± 2°

PROPRIETARY AND CONFIDENTIAL

THIS DRAWING IS PROTECTED BY COPYRIGHT AND CONTAINS INFORMATION PROPRIETARY TO MOLD-RITE, WEATHERCHEM AND STULL TECHNOLOGIES. ANY REPRODUCTION, DISCLOSURE, OR USE OF ITS CONTENTS OR ANY PART THEREOF IS EXPRESSLY PROHIBITED EXCEPT AS MOLD-RITE, WEATHERCHEM AND STULL TECHNOLOGIES OTHERWISE MAY AGREE IN WRITING



DISTRIBUTION CODE  
**D**

DRAWING NAME  
**70-400 CT CLOSURE  
 RECOMMENDED NECK FINISH**  
 DRAWING NUMBER  
**CQA - 10728**

DRAWN BY: DAS 6/3/2016

ENG APPR: BDG 4/6/2018

QA APPR: REL 08/13/2018

MATERIAL

MODEL NUMBER:

SCALE	SHEET SIZE	SHEET	REV/N/P
3:4	8.5 X 11	3 of 3	00.AA

MOLD-RITE, WEATHERCHEM AND STULL TECHNOLOGIES RESERVES THE RIGHT TO REVISE ANY OR ALL SPECIFICATIONS AND REQUIREMENTS.