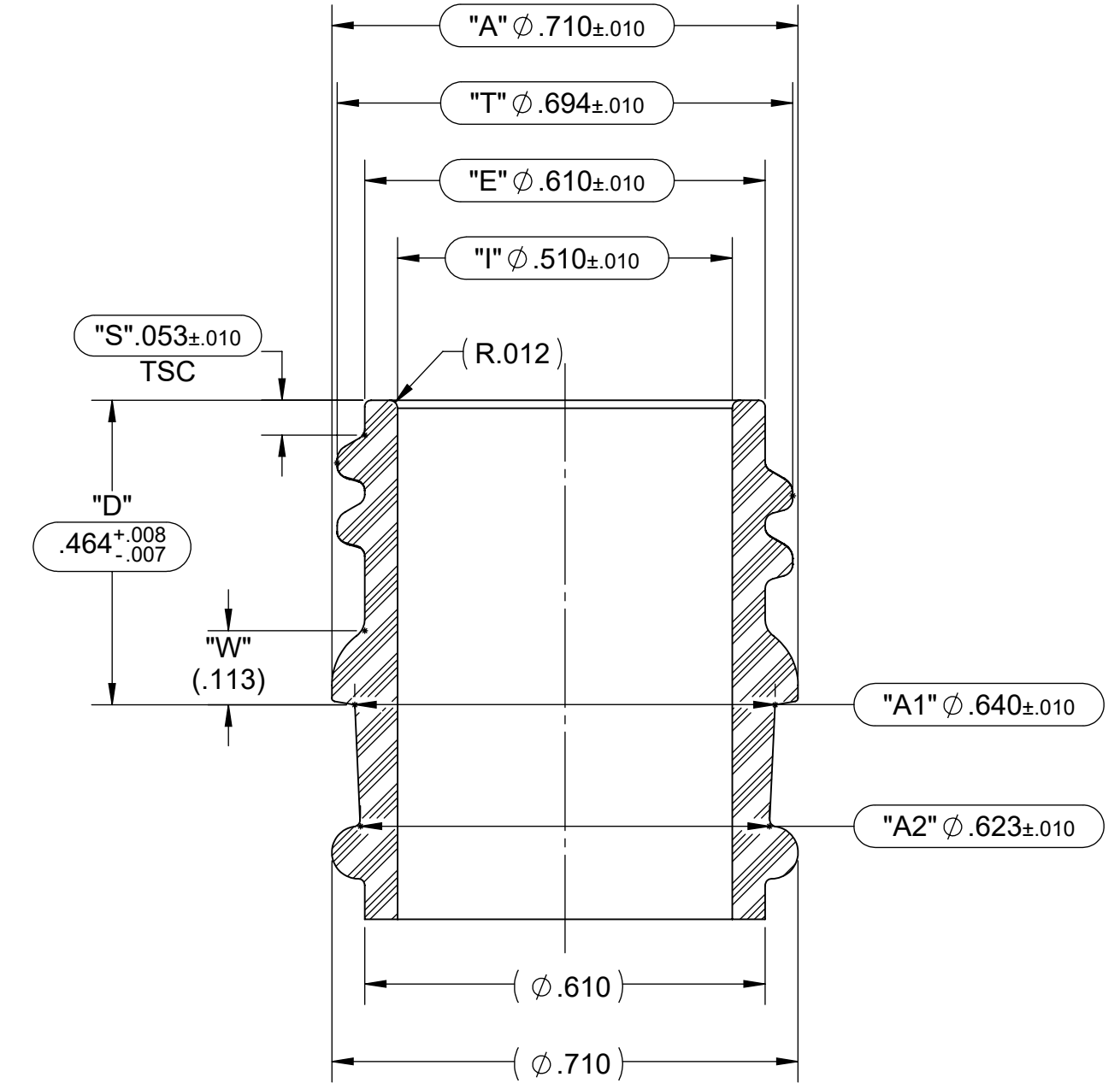
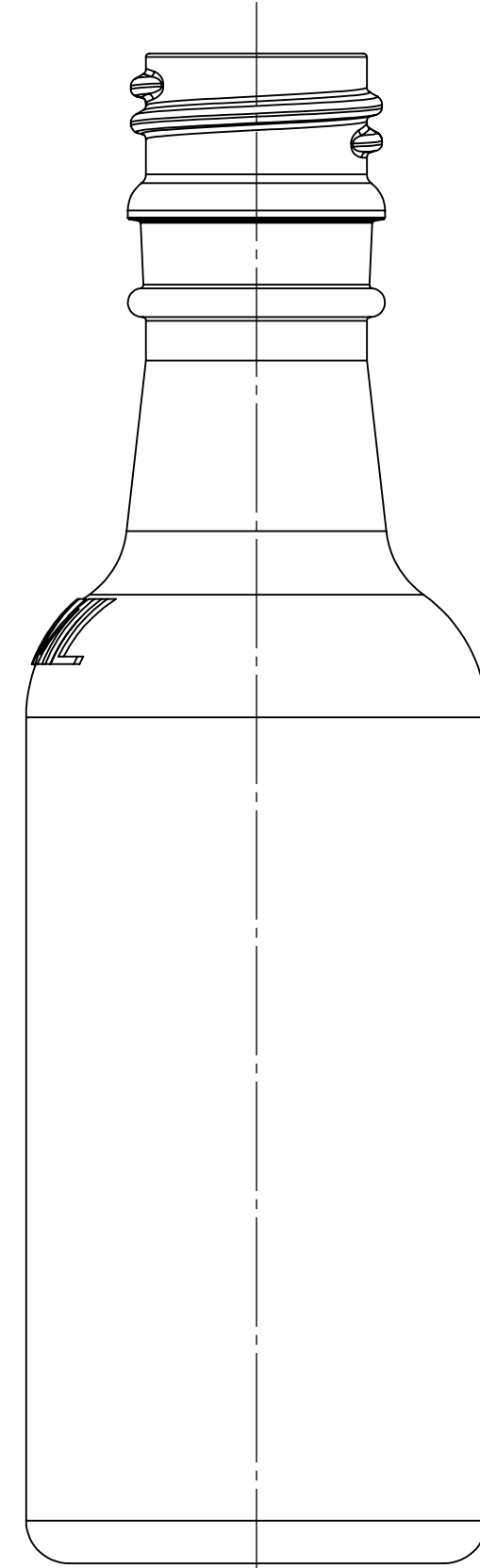
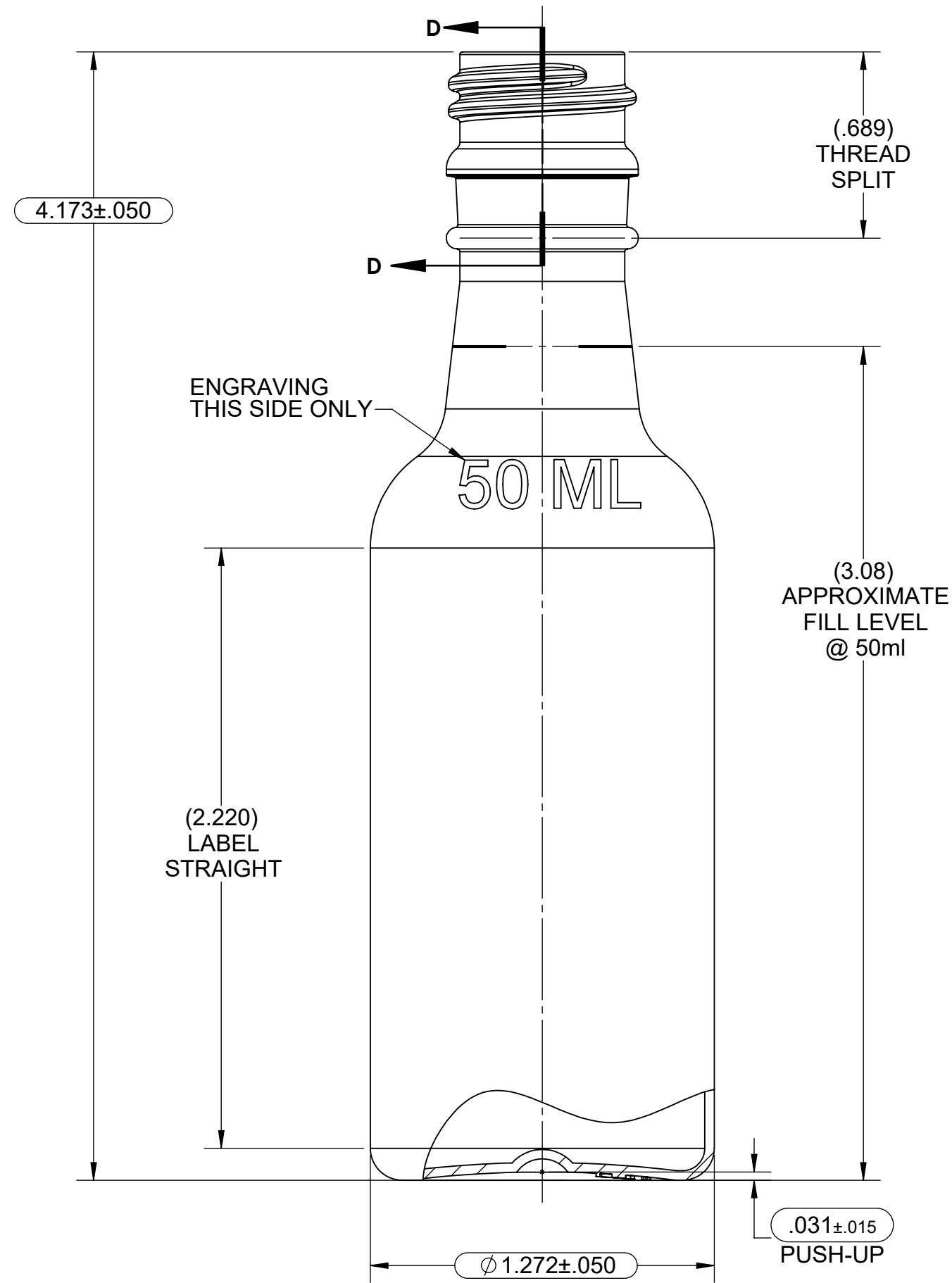


# PRODUCTION RELEASE

LET	REVISION DESCRIPTION	BY	EWR/ECN #	DATE
A	INITIAL RELEASE	EWK	72399247	02/20/2019

- NOTES:
- DO NOT SCALE DRAWING
  - ALL NECK FINISH DIAMETER DIMENSIONS ARE THE AVERAGE OF TWO MEASUREMENTS TAKEN ACROSS THE MAJOR AND MINOR AXES.
  - THREAD SPECS = SINGLE LEAD, 10 TPI (.100 PITCH), 1-1/2 REVOLUTIONS OF FULL THREAD PROFILE.
  - REPLACES LEGACY DRAWING B-6085.

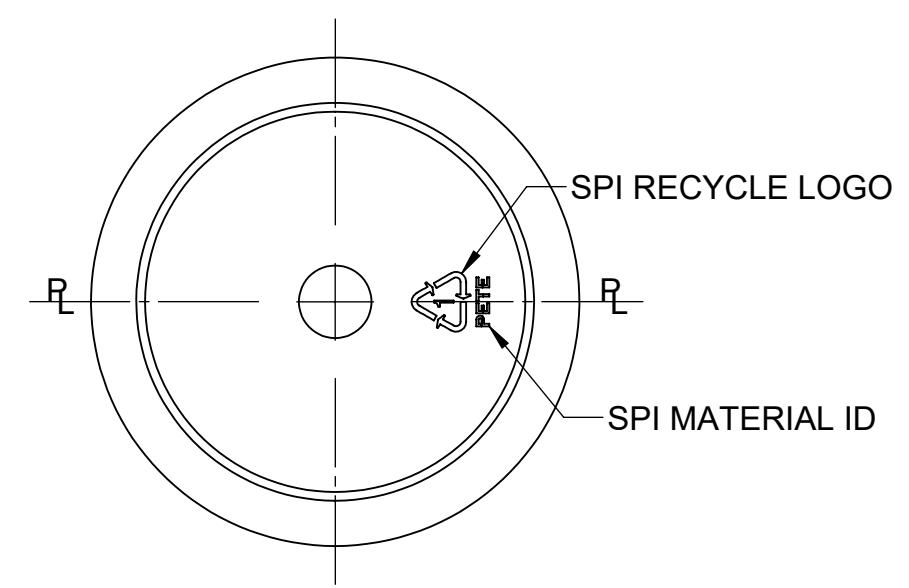


SECTION D-D  
SCALE 4 : 1

## MOLD #7511A

PART DATA	
MATERIAL	PETE
ESTIMATED WEIGHT	12.0 g ± 1.0 g
THEORETICAL AVERAGE WALL THICKNESS	.0350
WALL THICKNESS	.010 MIN
OVERFLOW CAPACITY	53.5 mL ± 1.0 mL
NECK FINISH	18mm KERR DWG #84126-C
NECK FINISH OVALITY (REF. NOTE #2)	.024 MAX

**NOTE: THIS DRAWING & DESIGN ARE PRELIMINARY AND SUBJECT TO CHANGE, UNLESS IN A PRODUCTION RELEASE STATE.**



REFERENCE DIMENSIONS ARE NOT INSPECTED AND NO TOLERANCE APPLIED      INSPECTION DIMENSIONS ARE VERIFIED WITH TOLERANCE

THIS DRAWING IS NOT A CONTROLLED DOCUMENT IF PRINTED OR COPIED FROM THE APPROVED LOCATION

**CONFIDENTIAL**

**Berry**  
101 OAKLEY STREET  
EVANSVILLE,  
INDIANA 47706  
TEL. (812) 424-2904

THIS UNPUBLISHED WORK IS THE PROPERTY OF BERRY GLOBAL INC. AND IS PROTECTED BY TRADE SECRET, COPYRIGHT AND OTHER INTELLECTUAL PROPERTY LAWS AND MAY ALSO BE SUBJECT TO A SPECIFIC OR GENERAL CONFIDENTIALITY AGREEMENT. IT IS NOT TO BE VIEWED BY UNAUTHORIZED PERSONS OR DUPLICATED IN ANY MEDIUM FOR PURPOSES OTHER THAN THOSE FOR WHICH IT IS SPECIFICALLY FURNISHED.

SIZE AND STYLE	<b>B18RD50JT</b>	DRAWING TYPE:	<b>CUSTOMER</b>
DESCRIPTION:	50mL ROUND LIQUOR		
DRAWING NO:	CP-190135-PRT01	PROJECT NUMBER:	1900104
LAST MODIFIED BY AND DATE:	CREATED BY:	CREATION DATE:	DRAWING REVISION: SHEET
ronmyers - 5/6/2019 10:12:54 AM	Eric W Kost	02/19/2019	A 1 of 1
			SCALE: SHEET SIZE
			2:1 C