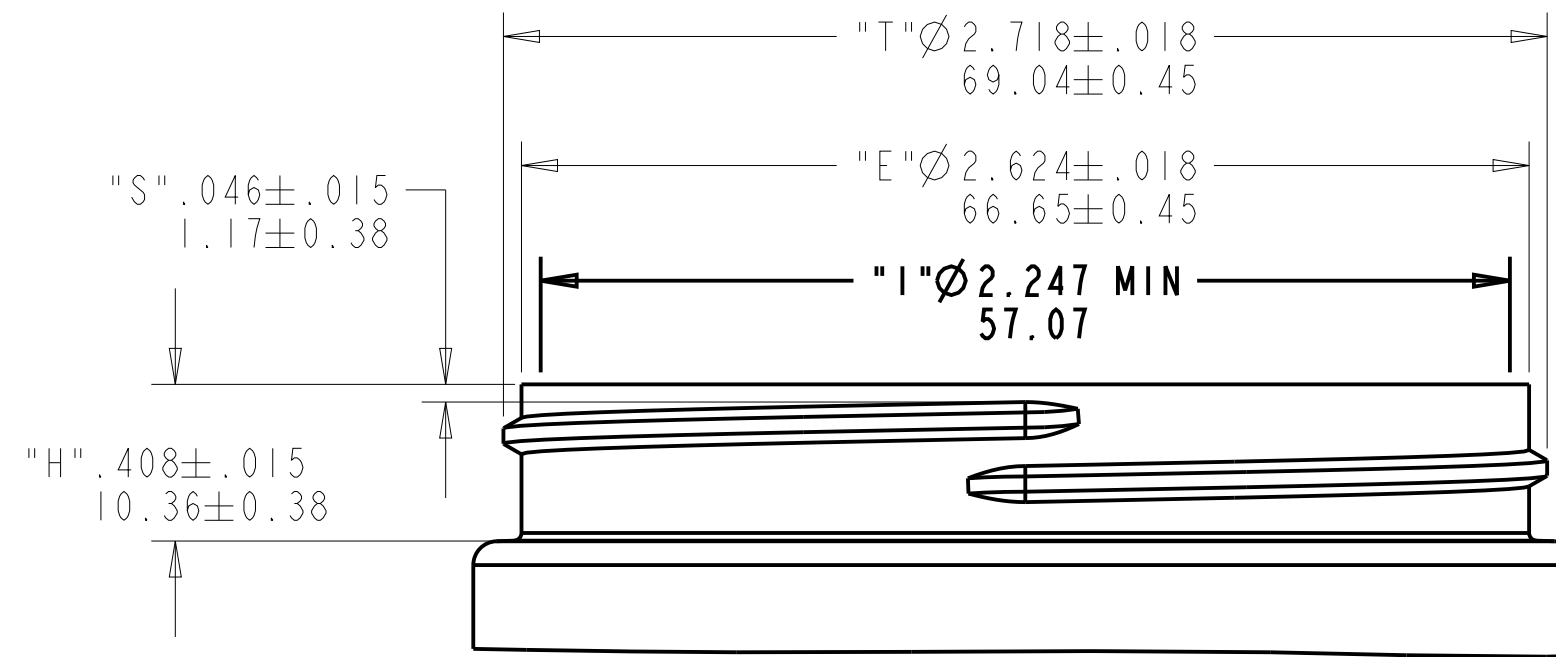
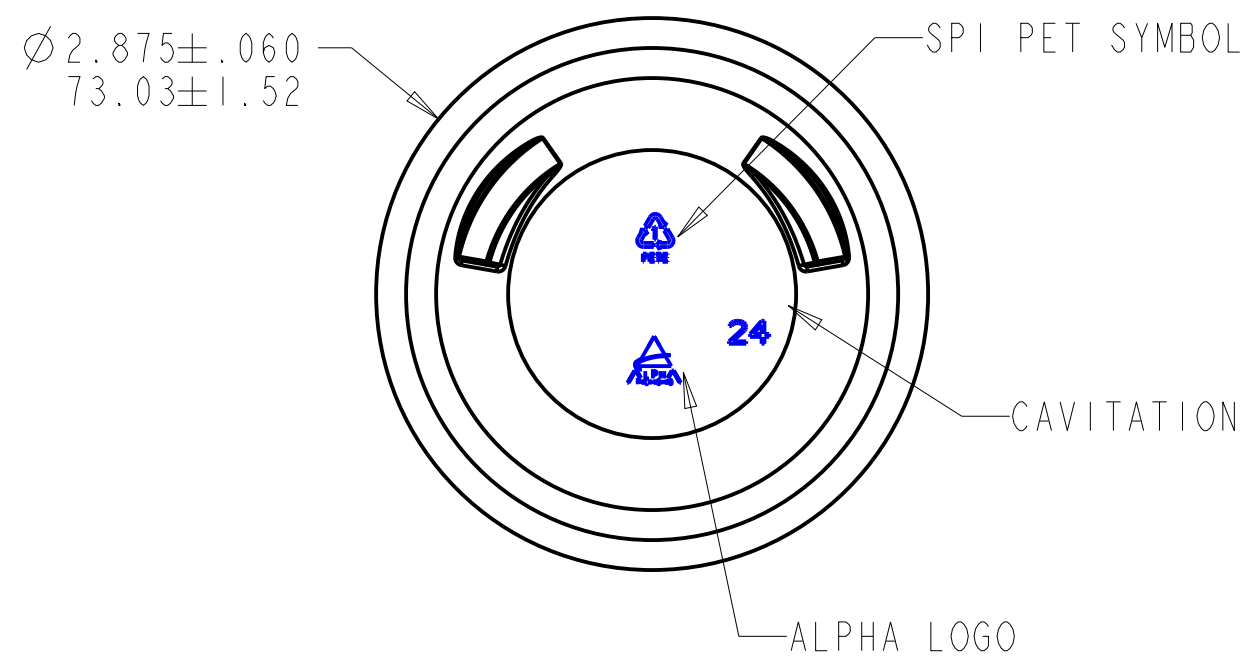
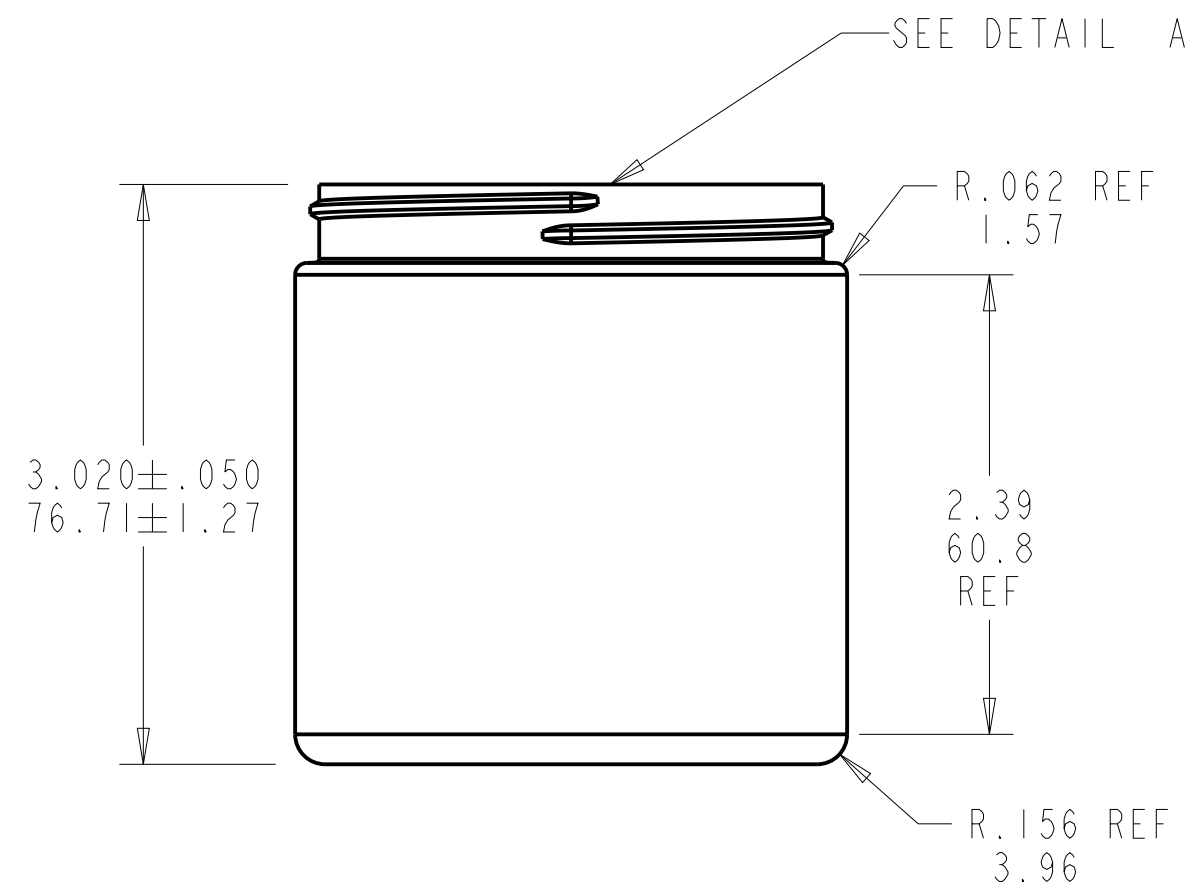
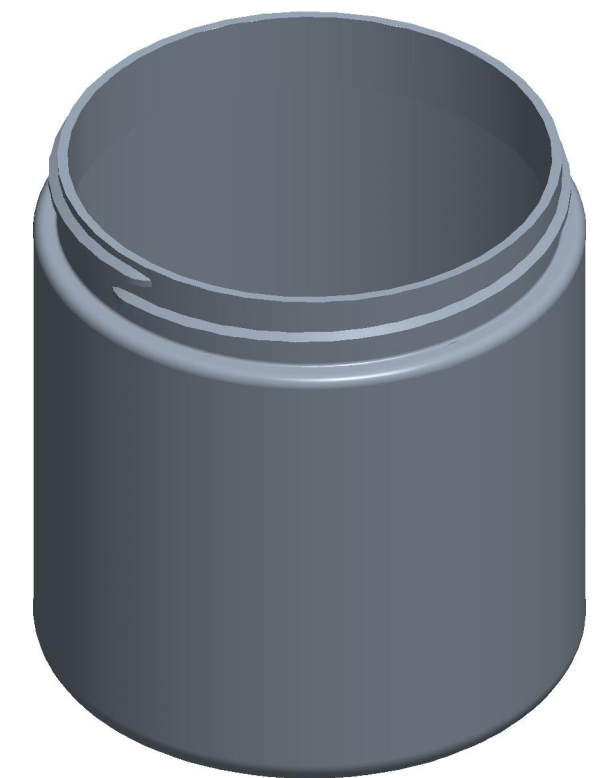


REV	ECN	DESCRIPTION	BY	DATE
F	N/A	ADD METRIC DIMENSIONS	SCT	26-APR-11
G	N/A	REMOVED H.G. WEIGHT OPTION (23.8G), AND ADJUST WEIGHT TOLERANCE (+/-1.5G)	RAB	03-OCT-14
H	N/A	ADD H.G. WEIGHT OPTION, AND ADJUST WEIGHT TOLERANCE TO STANDARD (+/-3.0G)	RAB	29-SEP-16
J	167	UPDATED WEIGHT TYPO (23.5G), REMOVED NL PLANT NOTE; REFER TO NL-SPECIFIC DRAWING FOR E.U. SPECS @ P0237JRSS070A, FINISH UPDATED TO L70-400 (HAD INCLUDED M7OSP400), SPI TOLERANCES ADDED TO OVERALL DIMENSIONS	STB	26-JUN-17



DETAIL A
NECK FINISH
6 TPI, 1 TURN
SCALE 2:1



© Alpha Packaging, Inc.	DISCLAIMER: Alpha Packaging assumes no responsibility for form, fit and function of closures, accessories, and/or shelf life and compatability of intended contents with this bottle.		
Specification General:	Min. Thk (in.)	Weight (g)	Overflow (mL)
All measurements are in inches, [mm]	.009	21.5 ± 2.0	286 ± 7
Base engraving is subject to change location & size	.010	23.8 ± 2.0	286 ± 7
Tolerance where not shown Decimal ± 0.05 [1.27] Angular $\pm 1^\circ$	NECK FINISH:	L70-400	
	MATERIAL:	PET	
Alpha Packaging, Inc. (314) 427-4300 / (800) 421-4772		Scale: NPD #	
S. THOMPSON		Date: 03-JAN-03	
8 oz. JAR		DwaRev: J	
Approved By:		Drawing Number: 8JRISS70L400	