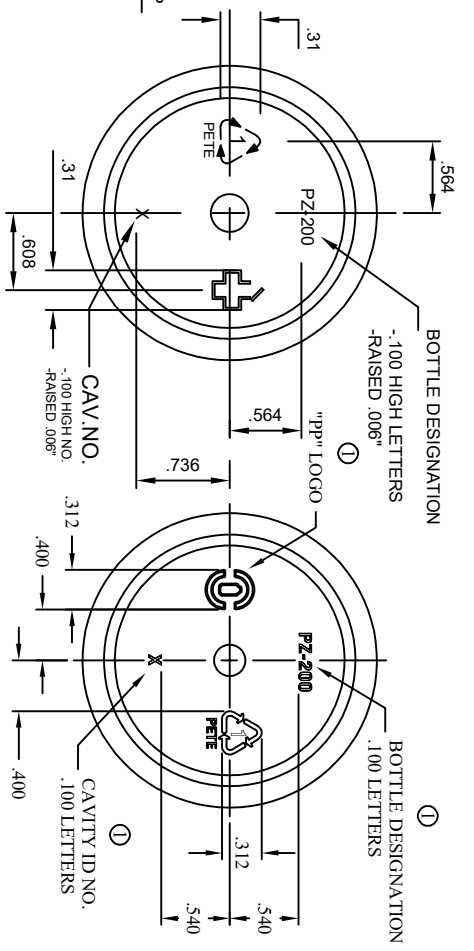
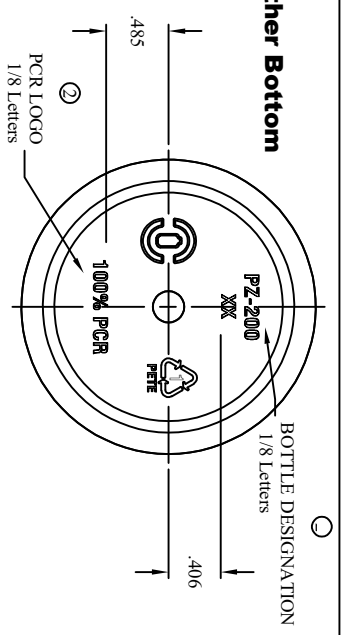


THREAD DATA:
 a.) "L" STYLE THREAD
 b.) HELIX ANGLE = 2°9'
 c.) 6 T.P.I. ~.167 PITCH
 d.) ONE FULL TURN OF THREAD

①② Available With Either Bottom



NOTES:

- 1) GRAM WEIGHT: 23.76 GRAMS ± 2 GRAMS
- 2) EST O'FLOW CAP'Y: 242cc ± 7cc
- 3) MAX. PERPENDICULAR DEVIATION = .005
- 4) MAX. TAPER = .002/INCH
- 5) LABEL PANEL WALL VARIATION NOT TO EXCEED .012" VERTICALLY AND RADIALY
- 6) MIN WALL IN LABEL PANEL = .015
- 7) MIN. HEEL WALL THICKNESS = .012
- 7) UNLESS SPECIFIED RADII: R .010

UNLESS OTHERWISE SPECIFIED

DRAWING IS IN INCHES

TOLERANCES

3 PLACE DECIMAL ± .030

2 PLACE DECIMAL ± .010

1 PLACE METRIC ± .1

ANGLES ± 1°

CONCENTRICITY ± .010 T.I.R.

DO NOT SCALE DRAWING

THIS DRAWING CONTAINS CONFIDENTIAL & PROPRIETARY INFORMATION AND MAY NOT BE REPRODUCED IN WHOLE OR IN PART WITHOUT WRITTEN AUTHORIZATION FROM COMAR LLC

NAME	KAD	DATE	05/24/17
DRAWN BY	KAD	CHECKED	ECJH
ENG APPR		DATE	05/30/17
MFG APPR			
QA APPR			

TITLE	PZ-200H (200cc) WIDE MOUTH ROUND BOTTLE		
MATERIAL	PETE	CUSTOMER	STOCK
COMMENTS	38mm CT NECK FINISH		
WADD NO	MB2189-SEM	SIZE (DWG NO)	PD-B-5926
		PART NO	161002001/161002001
		SHEET	1 OF 1
		REV	A



ONE COMAR PLACE, BIRMINGHAM, AL 35202
 1801 ANDRUS ROAD, BIRMINGHAM, AL 35202
 441 NORTH 5TH ST, SUITE 200, KILBUCK, IL 60148
 2777 PAULINE AVE, SHERWOOD, WI 53089
 8912 ROCKWELL RD, WOODSTOCK, GA 30086
 8712 CENTERVIEW, BEND, OR 97709, USA

REV	REVISION DESCRIPTION	CHECKED BY	DATE
1	COMAR OFFICIAL TITLE BLOCK	KAD	05/26/17
2	ADDED COMAR TO TITLE BLOCK	KAD	12/04/15
3	ECN# 1849, ADDED AN OPTIONAL BOTTOM VIEW FOR PCR	KD	04/29/13
4	ENG # 1715, PUSH-UP AREA WAS REDESIGNED, ADDED AN OPTIONAL BOTTOM VIEW	AZ	08/05/05