



1 PLANT STREET  
 PLATTSBURGH, NY 12901  
 TEL 518.561.1812  
 FAX 518.561.0017  
[MRPCAP.COM](http://MRPCAP.COM)

## Product Data Sheet

### MRP-PP30-1 Grade Polypropylene, Homopolymer Plastic Resin

#### Product Description

MRP-PP30-1 is a high flow polypropylene homopolymer resin designed for injection molding applications requiring good balance stiffness, excellent part finish, process ability, and good mold release.

#### Compliant to the Following Regulatory Standards:

FDA-21 CFR 177.1520(c)  
 EU 10/2011, EC 2002/72  
 RoHS  
 Proposition 65  
 CONEG/Heavy Metal


Typical Properties	Method	Typical Value	Unit
<b>Physical</b>			
Melt Mass-Flow Rate (MFR) (230°C/2.16 kg)	ASTM D1238	30	g/10 min
<b>Mechanical</b>			
Tensile Strength (50mm/min) (Yield)	ASTM D 638	33.1	MPa
Tensile Elongation (50mm/min) (Yield)	ASTM D 638	10	%
Flexural Modulus – 1% Secant (1.3 mm/min)	ASTM D790A	1380	MPa
Hardness, Rockwell R	ASTM D785	104	-
<b>Impact</b>			
Notched Izod impact (23 °C, Method A)	ASTM D 256A	37	J/m
<b>Thermal</b>			
Heat Deflection (Softening Point) Unannealed DTLU @ 66psi	ASTM D 648	91	°C
Processing Range	-----	400 – 500	°F

For further regulatory information contact Mold-Rite Plastics customer service or sales department.

#### Notes:

These are typical properties not to be construed as specifications.  
 Mold-Rite Plastics warranties this grade to meet typical data values and physical, chemical, and processing properties.

All results were obtained from manufacturer product data sheets (where applicable). The data are intended as a general guide, only, and do not necessarily represent results that may be obtained elsewhere. The use of Mold-Rite Plastics products must be guided by the users' own methods for selection of proper formulation. Mold-Rite Plastics disclaims any responsibility for misuse or misapplication of its products. Mold-Rite Plastics' liability and customer's exclusive remedy for any claims arising out of sales of its products are expressly limited to customer option for replacement (not to exceed the purchase price) with the addition of transportation charges, on material for which damage is claimed.

	<b>Raw Material Product Data Sheet</b>	
	<b>Product Name:</b> MRPWH01	<b>Revision #:</b> A
	<b>Revision Date</b>	<b>03/07/2019</b>
	<b>Effective Date</b>	<b>07/01/2019</b>

**Product Name:**

MRPWH01

**Product Description:**

FDA Compliant White colorant, intended to be used with injection-molded plastic resin

**Product Data:**

Additives None

<u>Typical Properties</u>	<u>Typical Value</u>
Delta E Tolerance	Less than 2.00
Visual Evaluation	Visual match to approved color standard

**FDA Compliance/Status**

FDA, Title 21 CFR Food & Drug Contact	<input checked="" type="checkbox"/> Compliant	<input type="checkbox"/> Not
---------------------------------------	---	------------------------------

This colorant formulation has been manufactured using FDA approved ingredients and, when used appropriately (with an FDA approved resin), will meet FDA contact applications regulated under the provisions of the Food, Drug, and Cosmetic Act (and subsequent amendments as outlined in Title 21 of the Code of Federal Regulation).

**Additional Compliance/Status (and amendments as of the date of this document)**

Proposition 65, Safe Drinking Water and Toxic Enforcement Act	<input checked="" type="checkbox"/> Compliant	<input type="checkbox"/> Not
CONEG, Model Toxics in Packaging Legislation	<input checked="" type="checkbox"/> Compliant	<input type="checkbox"/> Not
EU 2015/863, as regards the list of restricted substances, RoHS	<input checked="" type="checkbox"/> Compliant	<input type="checkbox"/> Not

For further regulatory information, please contact Mold Rite Plastic's customer service or sales department.

*This product data sheet addresses all colorants that meet the above requirements & specifications. Data was obtained from supplier product data sheets (where applicable). This data is intended to be used as a guide only. It is ultimately the customer's responsibility to determine the suitability of the material for their specific application, and to be responsible for assuring compliance with all applicable laws and regulations.*

## PRESSURE SEAL/20

- PRESSURE SEAL/20 is an innerseal with a construction of pressure sensitive adhesive coated on polystyrene foam.
- Recommended for use with dry products.
- Not tamper evident.
- Available with custom or standard print.

### Typical Product Attributes

#### Construction

Polystyrene Foam Pressure Sensitive Adhesive		SI (µm)	US (Mils)
		508,0 63,5	20.0 2.5
Minimum Width Width Tolerance		25,4 mm ± 1,6 mm	1.0 inch ± 1/16

#### Properties

Foam Density	7 - 15 Lb./Ft <sup>3</sup>
Water Vapor Transmission (WVTR)	Not Tested
Gas (O <sub>2</sub> ) (GTR)	Not Tested

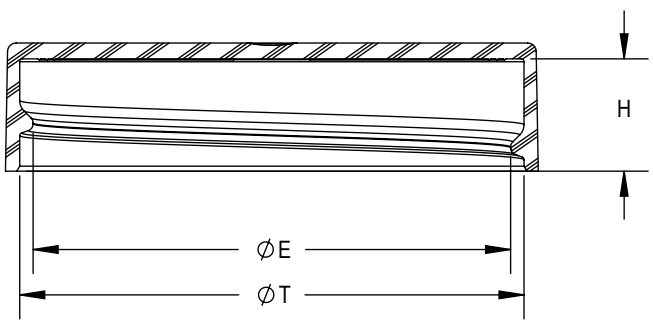
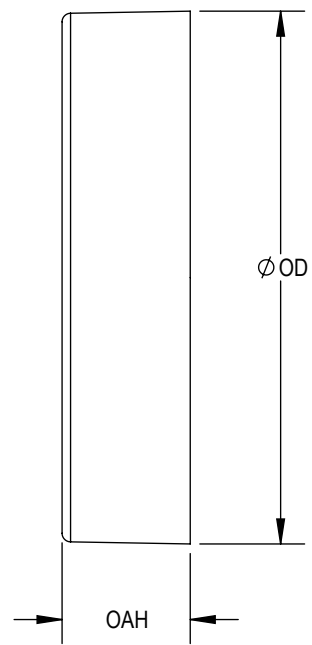
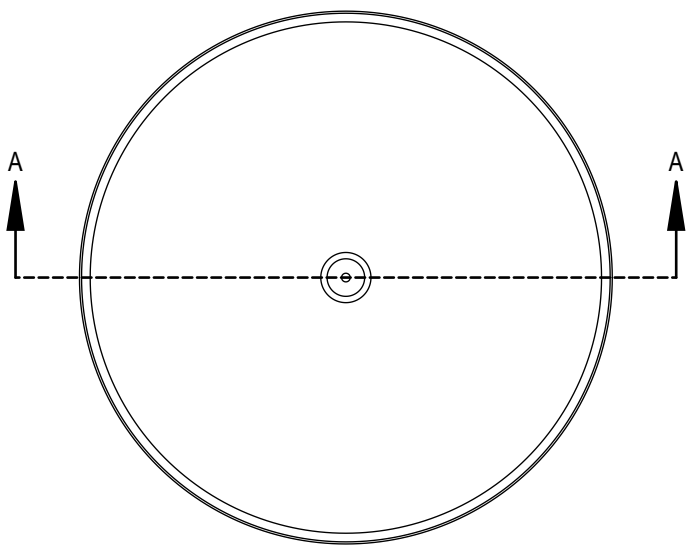
#### Regulatory Compliance

FDA Compliance	21 CFR 177.1640 Polystyrene and rubber-modified polystyrene. 21 CFR 177.1210 Closures with sealing gaskets for food containers 21 CFR 175.125 Pressure-sensitive adhesives.
Drug Master File (DMF)	2518
Other Compliances	USFDA Food Allergen Guidelines; California Proposition 65 Labeling Requirements; Limitations of Heavy Metals in Packaging per CONEG & EU 94/62/EC, Article 11

Original Date: 2016-07-18  
Revised Date: N/A  
Revision Number: 0  
Created by PEY

**DISCLAIMER:** This information is believed to be accurate at the time of printing and is subject to change without notice. Providing this information does not convey any licenses under any patent rights or intellectual property rights of Tri-Seal or others. TRI-SEAL MAKES NO WARRANTY, EXPRESS OR IMPLIED, WITH RESPECT TO THIS INFORMATION AND DISCLAIMS ALL LIABILITY FROM RELIANCE ON IT. Tri-Seal's only warranties for this product are those written warranties as may be agreed to by Tri-Seal and its customers. TRI-SEAL SPECIFICALLY DISCLAIMS ALL OTHER WARRANTIES, EXPRESS OR IMPLIED, WITH RESPECT TO THE PRODUCT, INCLUDING, BUT NOT LIMITED TO, WARRANTIES OF MERCHANTABILITY AND FITNESS FOR PARTICULAR PURPOSE.

Tri-Seal  
a Tekni-Plex company  
16125 Armour St. N.E.  
Alliance, OH 44601  
Tel: 330-821-1166 – Fax: 330-821-0364  
www.tri-seal.tekni-plex.com



SECTION A-A

**THREAD DETAIL:  
6 THREADS PER INCH, 0.167" PITCH**

REFERENCE	TOLERANCE	UNITS	DIMENSION
E	±.010[0.25]	in [mm]	1.656 [42.06]
T	±.010[0.25]	in [mm]	1.752 [44.50]
H	±.010[0.25]	in [mm]	0.390[9.91]
OD	±.012[0.30]	in [mm]	1.850[46.99]
OAH	±.010[0.25]	in [mm]	0.445 [11.30]
PART WEIGHT	± 0.50	g	3.69

**STATIC TORQUE RECOMMENDATION  
17-27 in-lbs**  
THIS REQUIREMENT MAY VARY DEPENDING UPON BOTTLE MATERIAL, NECK FINISH, AND CAPPING EQUIPMENT

DRAWING TYPE : **CUSTOMER**

REPLACES DRAWINGS:  
C-1010

DIMENSIONS ENCLOSED IN ( ) INDICATE REFERENCE DIMENSIONS AND NO TOLERANCE LIMITS ARE ESTABLISHED

TOLERANCES UNLESS OTHERWISE SPECIFIED			
DIMENSION (inches)	TOLERANCE	DIMENSION (mm)	TOLERANCE
0-0.787	±0.006	0-20	±0.152
0.788-1.181	±0.008	21-30	±0.203
1.182-2.756	±0.012	31-70	±0.305
2.757-3.937	±0.016	71-100	±0.406
3.938-5.096	±0.020	101-150	±0.508
5.097-7.874	±0.024	151-200	±0.610
7.875-9.843	±0.032	201-250	±0.813

ANGULAR TOLERANCE ± 2°

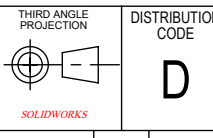
PROPRIETARY AND CONFIDENTIAL



THE CLOSURE DIMENSIONS DEPICTED ARE THOSE WHICH HAVE GENERALLY BEEN FOUND TO BE FUNCTIONAL BASED ON INDUSTRY EXPERIENCE BECAUSE OF VARIABILITY IN GLASS AND PLASTIC CONTAINER FINISHES, EACH CLOSURE/FINISH SYSTEM SHOULD BE INDIVIDUALLY EVALUATED AND TESTED TO ENSURE IT MEETS APPLICABLE PERFORMANCE CRITERIA. SEE QUALITY ASSURANCE SPECIFICATIONS FOR ADDITIONAL INFORMATION.

MOLD-RITE, WEATHERCHEM AND STULL TECHNOLOGIES RESERVES THE RIGHT TO REVISE ANY OR ALL SPECIFICATIONS AND REQUIREMENTS.

THIS DRAWING IS PROTECTED BY COPYRIGHT AND CONTAINS INFORMATION PROPRIETARY TO MOLD-RITE, WEATHERCHEM AND STULL TECHNOLOGIES. ANY REPRODUCTION, DISCLOSURE, OR USE OF ITS CONTENTS OR ANY PART THEREOF IS EXPRESSLY PROHIBITED EXCEPT AS MOLD-RITE, WEATHERCHEM AND STULL TECHNOLOGIES OTHERWISE MAY AGREE IN WRITING



DISTRIBUTION CODE: **D**

DRAWING NAME: **45-400 CT CLOSURE  
SS (Smooth Side - Smooth Top)**

DRAWING NUMBER: **CQA - 10300**

DRAWN BY: JDM 6/3/2016

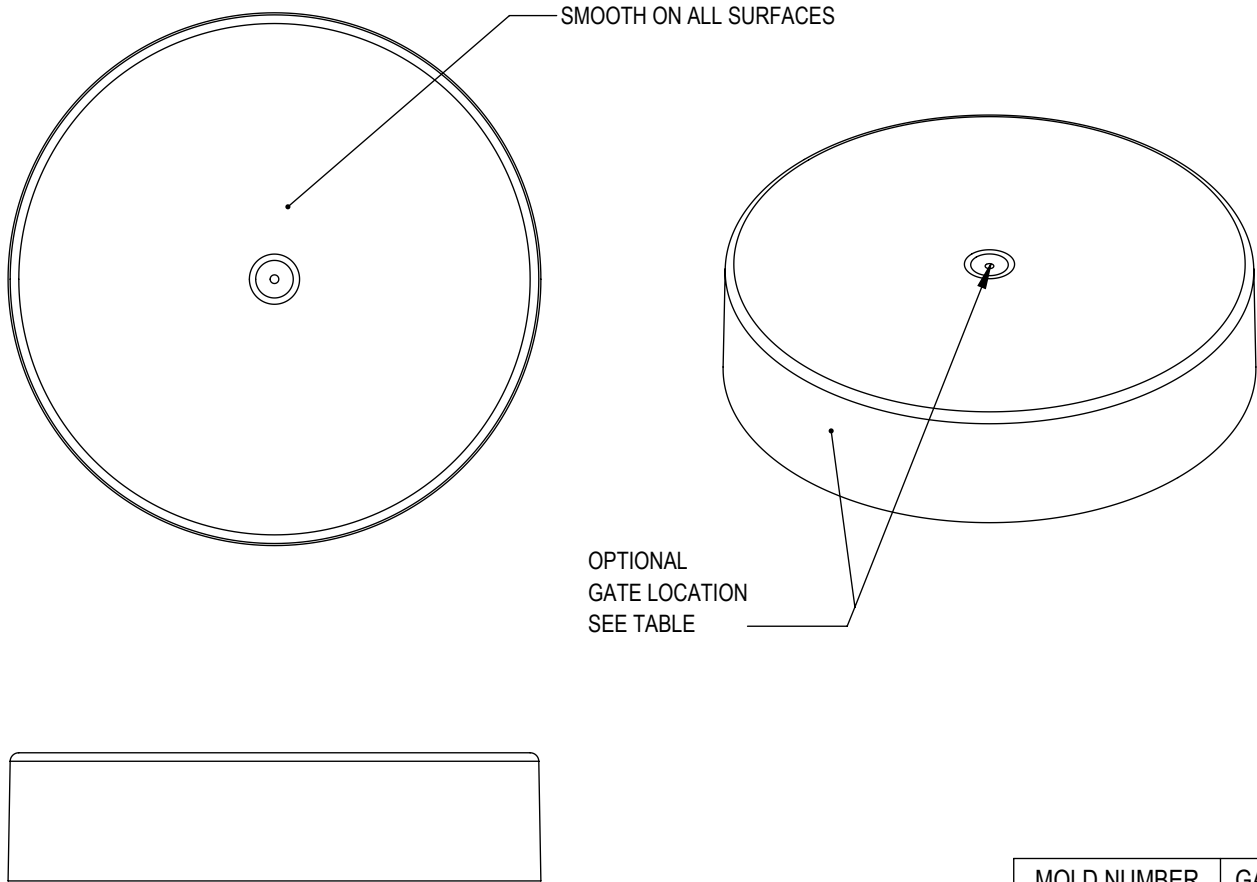
ENG APPR: BDG 8/17/2017

QA APPR: REL 09/05/2017

MATERIAL: <b>POLYPROPYLENE</b>			
MODEL NUMBER: <b>PM 10297 45-400 CT</b>			
SCALE: 1:1	SHEET SIZE: 8.5in*11in	SHEET: 1 of 3	REV NP: 00.AB

REVISIONS

DATE	REV.	N/P	PRODUCT DRAWING REQUEST	DESCRIPTION	ENG	DRW
6/3/2016	00	AA	PDR 16-025	UPDATE DRAWING FORMAT, REFER TO C-1010 FOR REVISION HISTORY	JDM	JDM
6/14/2017	00	AB	PDR 17-035	UPDATED OD TOLERANCE, T DIMENSION AND PART WEIGHT BASED ON HISTORICAL DATA, ADDED GATE LOCATION TABLE	BDG	BDG



MOLD NUMBER	GATE LOCATION
45001	SIDE
45003	SIDE
45005	SIDE
45007	SIDE
45011	TOP CENTER

THE CLOSURE DIMENSIONS DEPICTED ARE THOSE WHICH HAVE GENERALLY BEEN FOUND TO BE FUNCTIONAL BASED ON INDUSTRY EXPERIENCE BECAUSE OF VARIABILITY IN GLASS AND PLASTIC CONTAINER FINISHES. EACH CLOSURE/FINISH SYSTEM SHOULD BE INDIVIDUALLY EVALUATED AND TESTED TO ENSURE IT MEETS APPLICABLE PERFORMANCE CRITERIA. SEE QUALITY ASSURANCE SPECIFICATIONS FOR ADDITIONAL INFORMATION.

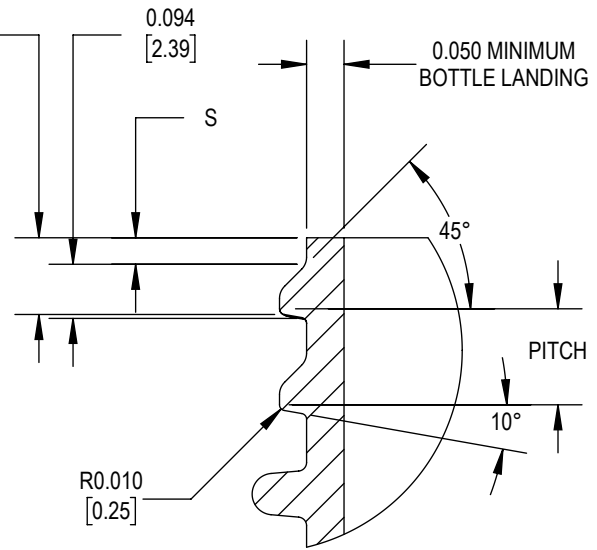
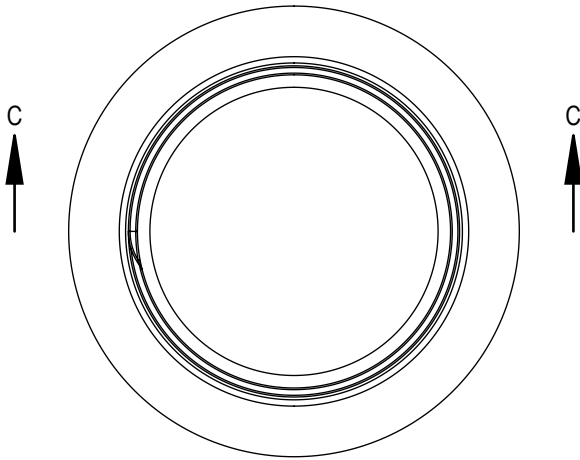
MOLD-RITE, WEATHERCHEM AND STULL TECHNOLOGIES RESERVES THE RIGHT TO REVISE ANY OR ALL SPECIFICATIONS AND REQUIREMENTS.

DRAWING TYPE : CUSTOMER			
REFERENCES: 45001, 45003, 45005, 45007, 45011		DIMENSIONS ENCLOSED IN ( ) INDICATE REFERENCE DIMENSIONS AND NO TOLERANCE LIMITS ARE ESTABLISHED	
TOLERANCES UNLESS OTHERWISE SPECIFIED			
DIMENSION (inches)	TOLERANCE	DIMENSION (mm)	TOLERANCE
0-0.787	±0.006	0-20	±0.152
0.788-1.181	±0.008	21-30	±0.203
1.182-2.756	±0.012	31-70	±0.305
2.757-3.937	±0.016	71-100	±0.406
3.938-5.096	±0.020	101-150	±0.508
5.097-7.874	±0.024	151-200	±0.610
7.875-9.843	±0.032	201-250	±0.813
ANGULAR TOLERANCE ± 2°			
PROPRIETARY AND CONFIDENTIAL			
THIS DRAWING IS PROTECTED BY COPYRIGHT AND CONTAINS INFORMATION PROPRIETARY TO MOLD-RITE, WEATHERCHEM AND STULL TECHNOLOGIES. ANY REPRODUCTION, DISCLOSURE, OR USE OF ITS CONTENTS OR ANY PART THEREOF IS EXPRESSLY PROHIBITED EXCEPT AS MOLD-RITE, WEATHERCHEM AND STULL TECHNOLOGIES OTHERWISE MAY AGREE IN WRITING			

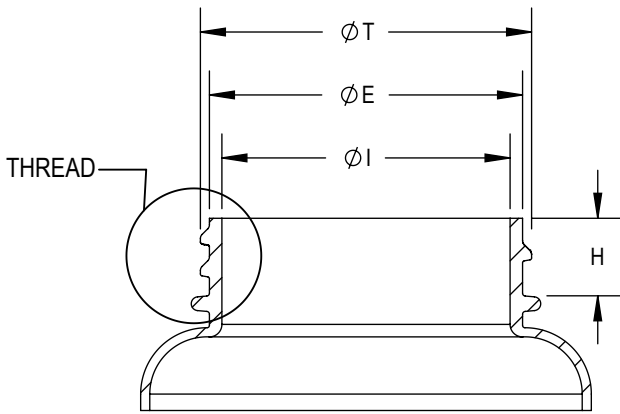


THIRD ANGLE PROJECTION	DISTRIBUTION CODE <b>D</b>	DRAWING NAME <b>45-400 CT CLOSURE SS (Smooth Side - Smooth Top)</b>			
		DRAWING NUMBER <b>CQA - 10300</b>			
DRAWN BY. JDM	6/3/2016	MATERIAL POLYPROPYLENE			
ENG APPR. BDG	8/17/2017	MODEL NUMBER: PM 10297 45-400 CT			
QA APPR. REL	09/05/2017	SCALE 1:1	SHEET SIZE 8.5 X 11	SHEET 2 of 3	REV.NP 00.AB

0.133  
[3.38]  
S' - CRITICAL FOR ORIENTATION  
0.001" = 2 IN ROTATION



DETAIL THREAD  
SCALE 3 : 1



SECTION C-C  
SCALE 1 : 1

REFERENCE	TOLERANCE	UNITS	DIMENSION
E	±0.012 [0.30]	in [mm]	1.631 [41.43]
T	± 0.017 [0.43]	in [mm]	1.725 [43.82]
I	MINIMUM	in [mm]	1.525 [38.74]
S	± 0.015 [0.38]	in [mm]	0.046 [1.17]
H	± 0.015 [0.38]	in [mm]	0.415 [10.54]
TPI			6
PITCH		in [mm]	0.167 [4.24]

NOTE: THE NOMINAL ORIENTATION ILLUSTRATED IS BASED ON NOMINAL DIMENSIONS OF BOTH THE CLOSURE AND THE RECOMMENDED NECK FINISH. FOR EXACT ORIENTATION EACH BOTTLE SHOULD BE EVALUATED ON A CASE BY CASE BASIS.

DRAWING TYPE : CUSTOMER

DIMENSIONS ENCLOSED IN ( ) INDICATE REFERENCE DIMENSIONS AND NO TOLERANCE LIMITS ARE ESTABLISHED

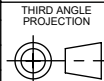
TOLERANCES UNLESS OTHERWISE SPECIFIED

DIMENSION (inches)	TOLERANCE	DIMENSION (mm)	TOLERANCE
0-0.787	±0.006	0-20	±0.152
0.788-1.181	±0.008	21-30	±0.203
1.182-2.756	±0.012	31-70	±0.305
2.757-3.937	±0.016	71-100	±0.406
3.938-5.096	±0.020	101-150	±0.508
5.097-7.874	±0.024	151-200	±0.610
7.875-9.843	±0.032	201-250	±0.813

ANGULAR TOLERANCE ± 2°

PROPRIETARY AND CONFIDENTIAL

THIS DRAWING IS PROTECTED BY COPYRIGHT AND CONTAINS INFORMATION PROPRIETARY TO MOLD-RITE, WEATHERCHEM AND STULL TECHNOLOGIES. ANY REPRODUCTION, DISCLOSURE, OR USE OF ITS CONTENTS OR ANY PART THEREOF IS EXPRESSLY PROHIBITED EXCEPT AS MOLD-RITE, WEATHERCHEM AND STULL TECHNOLOGIES OTHERWISE MAY AGREE IN WRITING



SOLIDWORKS

DISTRIBUTION CODE

D

DRAWING NAME

45-400 CT CLOSURE  
RECOMMENDED NECK FINISH

DRAWING NUMBER

CQA - 10300

DRAWN BY: JDM

DATE: 6/3/2016

MATERIAL

ENG APPR: BDG

DATE: 8/17/2017

MODEL NUMBER:

QA APPR: REL

DATE: 09/05/2017

SCALE: 1:2

SHEET SIZE: 8.5 X 11

SHEET: 3 of 3

REV/N/P: 00.AB

THE CLOSURE DIMENSIONS DEPICTED ARE THOSE WHICH HAVE GENERALLY BEEN FOUND TO BE FUNCTIONAL BASED ON INDUSTRY EXPERIENCE BECAUSE OF VARIABILITY IN GLASS AND PLASTIC CONTAINER FINISHES, EACH CLOSURE/FINISH SYSTEM SHOULD BE INDIVIDUALLY EVALUATED AND TESTED TO ENSURE IT MEETS APPLICABLE PERFORMANCE CRITERIA. SEE QUALITY ASSURANCE SPECIFICATIONS FOR ADDITIONAL INFORMATION.

MOLD-RITE, WEATHERCHEM AND STULL TECHNOLOGIES RESERVES THE RIGHT TO REVISE ANY OR ALL SPECIFICATIONS AND REQUIREMENTS.