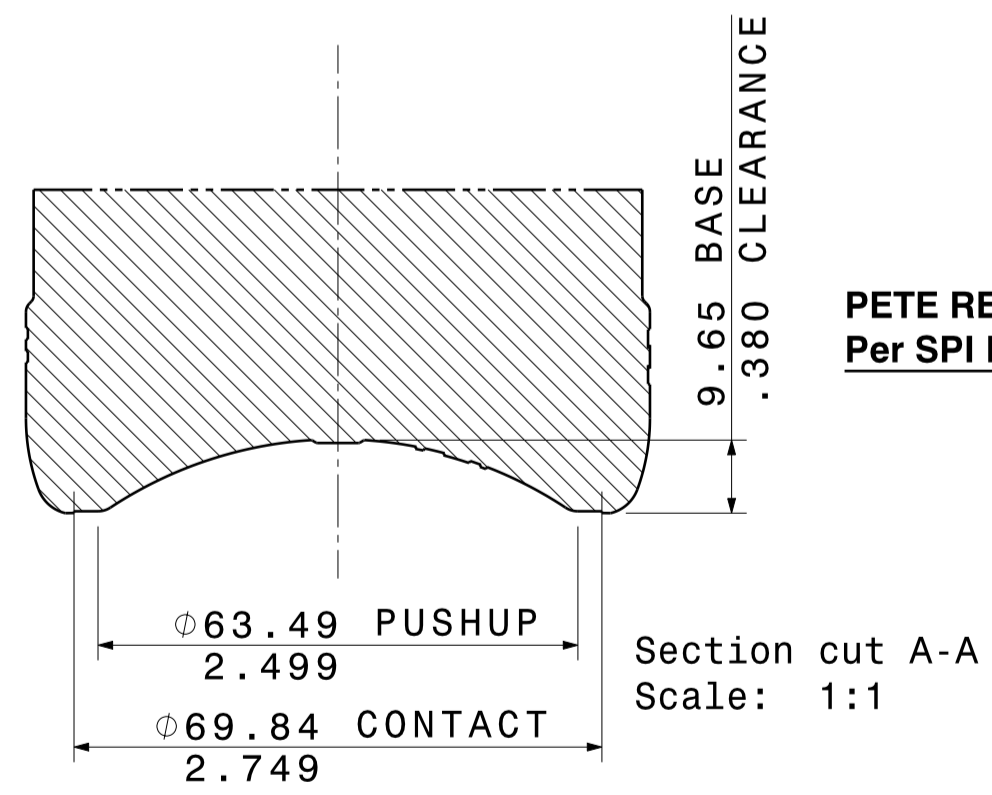
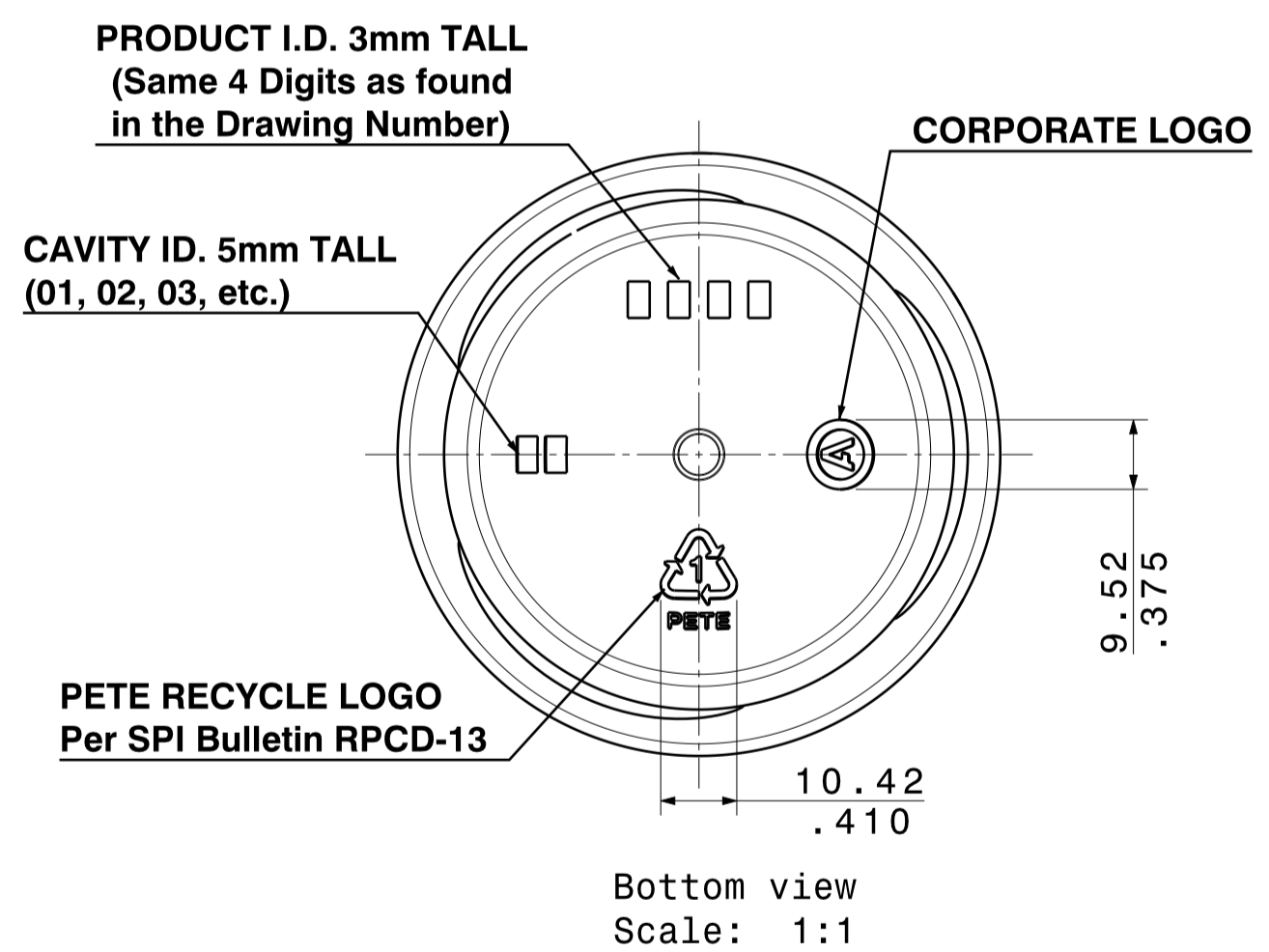


GAUGE POINT DETAIL
P-3639-PD
Scale: 2:1

All Base engraving per CAD Geometry
Recessed in mold 0.3mm / .012",
raised on container



ALTERNATIVE PREFORMS

| DESCRIPTION | TARGET OVERFLOW | MAT'L VOLUME IN BODY | AVG. WALL THICKNESS | PREFORM DRAWING | FINISH DRAWING | CONTAINER HEIGHT |
|---------------|-----------------|----------------------|---------------------|-----------------|----------------|------------------|
| 79.2g PREFORM | 1014 ± 9 ml | 52.3 cc | .80mm/.032" | P-3417-PD | F-3243-PD | 296.67mm/11.680" |
| 70.0g PREFORM | 1021 ± 9 ml | 46.6 cc | .71mm/.028" | P-5104-PD | F-3913-PD | 296.29mm/11.665" |

| Rev | Description | By | Date | ECR |
|-----|---|-----|---------|------------------|
| A | ORIGINAL RELEASE | RJS | 02MAR06 | 416410505098-001 |
| B | UPDATED FINISH & PREFORM | SS | 28JAN08 | 416430907025-026 |
| C | UPDATED NOTES/TILE BLOCK TO LATEST STANDARD | KDG | 21MAY20 | 0000165748 |
| D | ADDED ALTERNATE PREFORMS | JCG | 22JUN21 | ECN00000085 |
| E | MODIFIED DRAWING TITLE (WAS 1.0L UNIVERSAL) | JCG | 16NOV21 | 0000184529 |

Notes:

1. Dimensions are nominal in millimeters/inches.
2. This drawing represents the bottle 72 hours after manufacture when stored at normal conditions.
3. The dimensional tolerances to be applied to all height dimensions are the same as the tolerance applied to the Overall Height of the container.
4. The dimensional tolerances to be applied to all diameter, width and thickness dimensions are the same as the tolerance applied to the major diameter or width of the container.
5. The weight shown on the drawing is based on the design weight of the preform. The actual weight will vary based on the actual production weight of the preforms.
6. The fill levels are based upon water at room temperature. Alcohol fill levels may vary.
7. Dimensions marked with a "*" represent quality gauge pts. and "#" represent manufacturing gauge pts.

CONFIDENTIAL
Volume & Weight Information

| Capacity Specification | |
|--|-------------------------------------|
| Fill Line Capacity (Approximate): 1000 ml | Overflow Capacity: 1029 ± 9 ml |
| Material: PET | Container Target Weight: 59.0 gm |

| Drawing Information | | |
|-------------------------------|------------------------------|---------------------------|
| Process/Preform: P-3639-PD | Finish Drawing: F-3527-PD | Reference: C-3951-PD-D |
| Date: 02MAR06 | Drawn By: RJS | Customer: AMCOR |

Title: 1.0L STRAIGHT NECK

Drawing Type: **PRODUCT DRAWING**

Drawing Number: **C-4185-PD** Rev. **E**

Amcor Rigid Packaging USA, LLC
10521 S. Hwy M-52
Manchester, MI 48158

CONFIDENTIAL

3D CAD IS THE MASTER MODEL FOR THIS PRODUCT
THIS DOCUMENT IS THE EXCLUSIVE PROPERTY OF AMCOR RIGID PACKAGING USA, LLC. THE INFORMATION CONTAINED HEREIN, AND ANY MODEL CONTAINER, PREFORM OR OTHER ARTICLE RECEIVED, IS OF A CONFIDENTIAL AND PROPRIETARY NATURE AND MUST BE USED ONLY FOR THE PURPOSE FOR WHICH IT IS DISCLOSED. THE HOLDER AGREES NOT TO DISCLOSE TO A THIRD PARTY AND TO RETURN THE SAME TO AMCOR RIGID PACKAGING USA, LLC UPON COMPLETION OF USE OR REQUEST. THIS DRAWING IS NO LONGER A CONTROLLED DOCUMENT WITHIN AMCOR RIGID PACKAGING USA, LLC. DO NOT ASSUME THAT THIS IS THE CURRENT DRAWING.