



Eastlon PET CB-602 Specification

Property	Unit	Value	Test method
IV	dl / g	0.80 ± 0.02	FET - 5SACQQPR02
Melting point	°C	250 ± 5	FET - 5SACQQPR03
Color (L value)		> 82	FET - 5SACQQPR04
Color (B value)		< 2.0	FET - 5SACQQPR04
Acid number	meq/kg	35 ± 10	FET - 5SACQQPR06
Water content	wt %	< 0.4	FET - 5SACQQPR25
Packing	kg / bag	1050 or 1100	
Pellet shape		cylinder	
Pellet weight	g/100grains	1.5 ± 0.2	FET - 5SACQQPR26
Real Density	g / ml	1.4 ± 0.2	FET - 5SACQQPR26
Bulk density	g / ml	0.87 ± 0.05	FET - 5SACQQPR26
DEG content	wt %	1.3 ± 0.2	FET - 5SACQQPS26
AA content	ppm	< 1.0	FET - 5SACQQPS31

** Notes: Properties reported here are typical of average lots. FAR EASTERN NEW CENTURY CORPORATION makes no representation that the material in any particular shipment will conform exactly to the values given.*



Technical Data Sheet

COMPETE F 10018245 Amber - PET (CC00001133)

Color Masterbatch

Product Description

COMPETE F 10018245 Amber - PET (CC00001133)

General Key Characteristics

COMPETE F 10018245 Amber - PET (CC00001133) is a Universal based Flake-Small product.

Concentrate

Color - Brown

Carrier - Universal

Typical Addition Rate - .25 %

Regulatory Information

- Based upon the information provided to us by our suppliers, we certify that, to the best of our knowledge, the product identified on this data sheet, when used at the recommended use rates, alone should not cause the products manufactured to exceed the limits for heavy metals prescribed under the CONEG Model Toxics Legislation; namely that, except as exempted by that model legislation, the sum of the concentration levels of lead, cadmium, mercury and hexavalent chromium present in any such product or component is not to exceed 100 parts per million by weight (0.01%).

Copyright © 2007, PolyOne Corporation. PolyOne makes no representations, guarantees, or warranties of any kind with respect to the information contained in this document about its accuracy, suitability for particular applications, or the results obtained or obtainable using the information. Some of the information arises from laboratory work with small-scale equipment which may not provide a reliable indication of performance or properties obtained or obtainable on larger-scale equipment. Values reported as "typical" or stated without a range do not state minimum or maximum properties; consult your sales representative for property ranges and min/max specifications. Processing conditions can cause material properties to shift from the values stated in the information. PolyOne makes no warranties or guarantees respecting suitability of either PolyOne's products or the information for your process or end-use application. You have the responsibility to conduct full-scale end-product performance testing to determine suitability in your application, and you assume all risk and liability arising from your use of the information and/or use or handling of any product. POLYONE MAKES NO WARRANTIES, EXPRESS OR IMPLIED, INCLUDING, BUT NOT LIMITED TO, IMPLIED WARRANTIES OF MERCHANTABILITY AND FITNESS FOR A PARTICULAR PURPOSE, either with respect to the information or products reflected by the information. This data sheet shall NOT operate as permission, recommendation, or inducement to practice any patented invention without permission of the patent owner.



Technical Data Sheet

COMPETE F 10018245 Amber - PET (CC00001133)

Physical

Product Form - Flake-Small

Packaging

COMPETE F 10018245 Amber - PET (CC00001133) is supplied in Flake-Small form and packed in 50 lb. boxes, 250 lb drums, or 1000 lb gaylords. The product should be stored in a dry place and kept free of contamination.

Contact Information

Americas

U.S. – Avon Lake, Ohio
+1 440 930 1000
Argentina – Buenos Aires
+0054 11 4200 5917
Brasil – Campinas
+55 19 3206 0561

Asia

China – Shanghai
+86 (0) 21 5080 1188
China – Shenzhen
+86 (0) 755 2969 2888
India – Mumbai
+91 22 2564 0750
+91 9820 194 220
Thailand – Rachatewa, Bangplee
Samutprakarn
+66 (0) 2327 9100

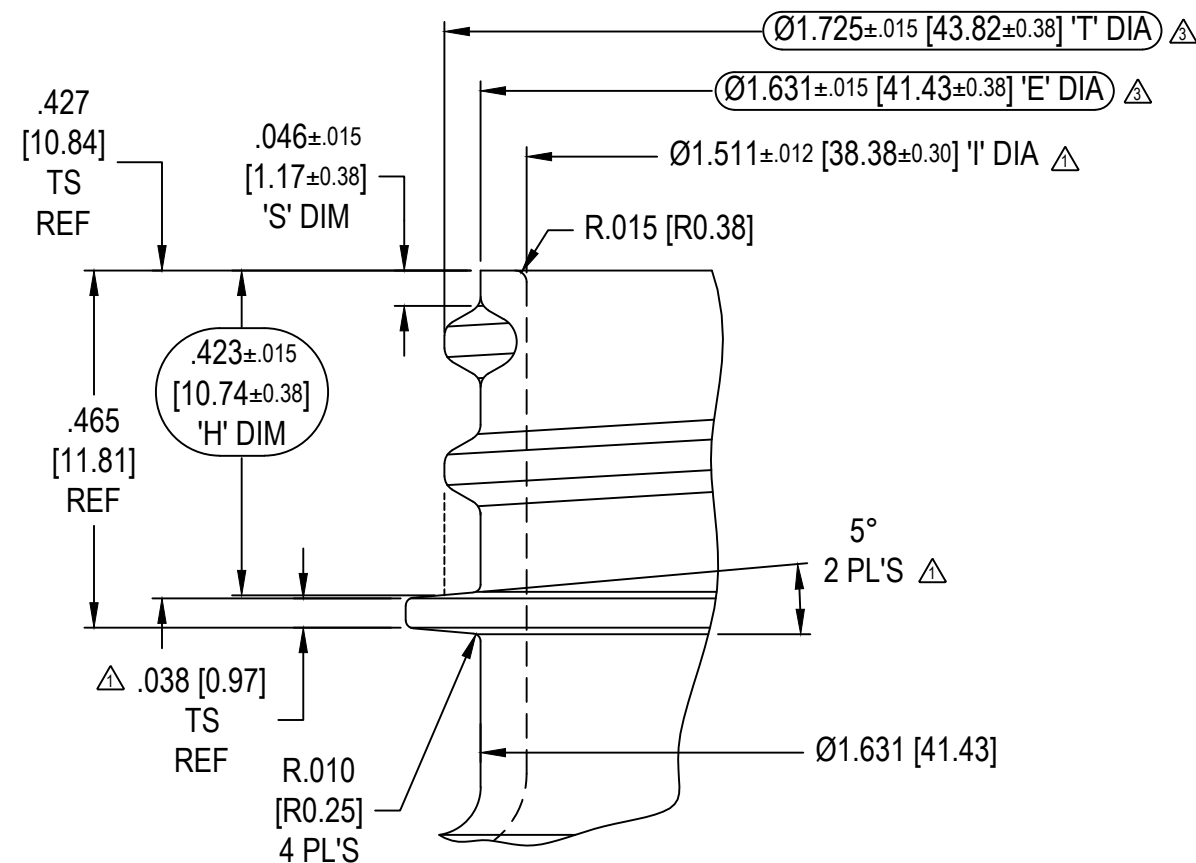
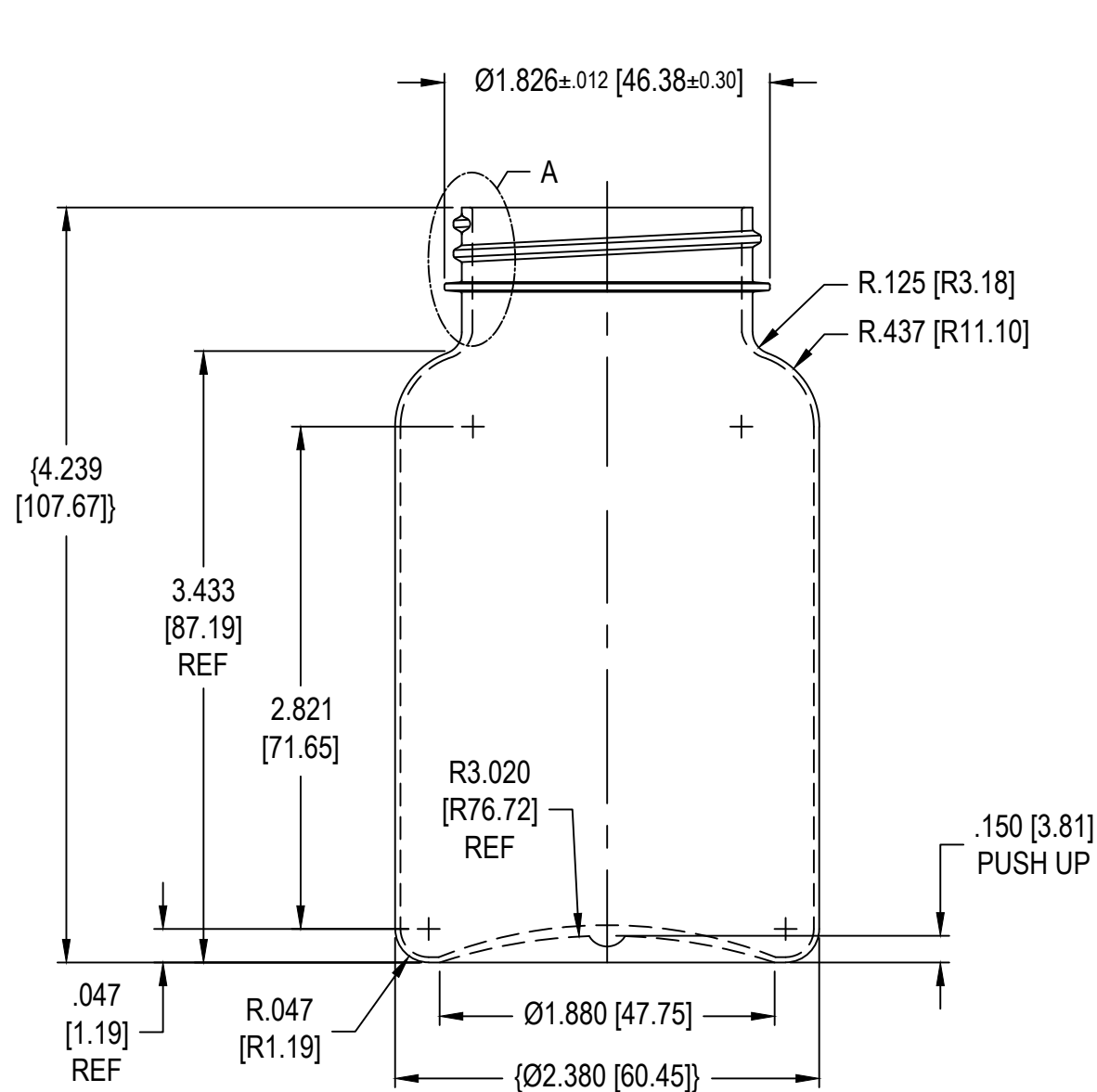
Europe

Belgium – Assesse
+32 (0) 830 660 211
Czech Republic – Praha 1
+420 224 142 214
Denmark – Glostrup
+45 (0) 43 206 300
France – Saint-Ouen L'Aumone
+33 (0) 134 403 950
France – Tossiat
+33 (0) 474 426 970
Germany – Bendorf
+49 (0) 2622 700 90
Hungary – Gyor
+36 (0) 96 515 610
Italy – Gallarate
+39 03 31 797 448

Europe - cont'd

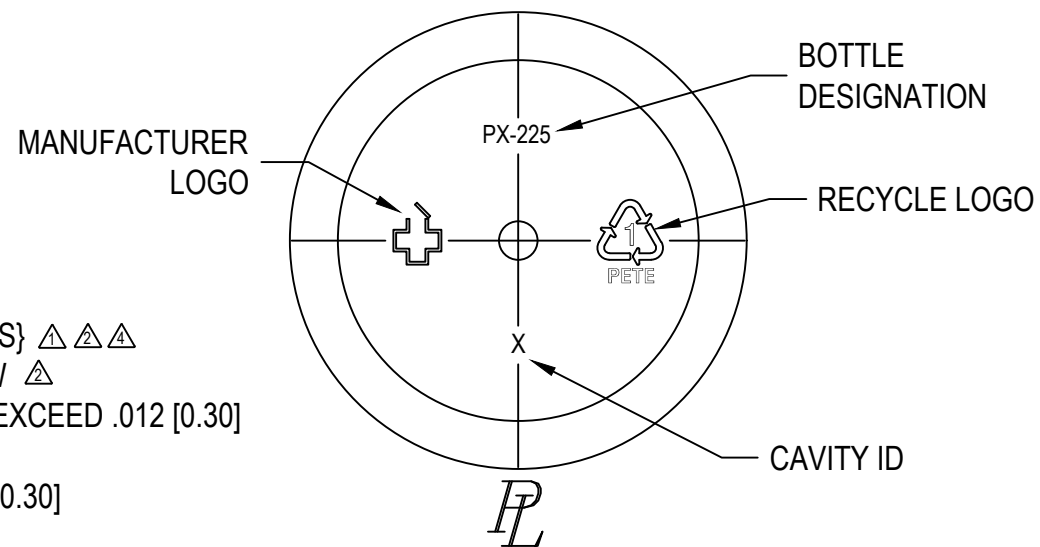
Poland – Kutno
+48 12 296 48 80
Spain – Oricain- Navarra
+34 (0) 948-331-011
Sweden – Angered
+46 (0) 31 928 450

Copyright © 2007, PolyOne Corporation. PolyOne makes no representations, guarantees, or warranties of any kind with respect to the Information contained in this document about its accuracy, suitability for particular applications, or the results obtained or obtainable using the information. Some of the Information arises from laboratory work with small-scale equipment which may not provide a reliable indication of performance or properties obtained or obtainable on larger-scale equipment. Values reported as "typical" or stated without a range do not state minimum or maximum properties; consult your sales representative for property ranges and min/max specifications. Processing conditions can cause material properties to shift from the values stated in the Information. PolyOne makes no warranties or guarantees respecting suitability of either PolyOne's products or the Information for your process or end-use application. You have the responsibility to conduct full-scale end-product performance testing to determine suitability in your application, and you assume all risk and liability arising from your use of the Information and/or use or handling of any product. POLYONE MAKES NO WARRANTIES, EXPRESS OR IMPLIED, INCLUDING, BUT NOT LIMITED TO, IMPLIED WARRANTIES OF MERCHANTABILITY AND FITNESS FOR A PARTICULAR PURPOSE, either with respect to the Information or products reflected by the Information. This data sheet shall NOT operate as permission, recommendation, or inducement to practice any patented invention without permission of the patent owner.



NECK DETAIL Δ

SCALE: 4X1
 SPECIAL, L45SP400
 6 TPI, .167 PITCH
 ONE FULL TURN MIN



NOTES:

- 1) MATERIAL: PETE
- 2) GRAM WEIGHT: {26.0 GRAMS \pm 1.5 GRAMS} $\Delta \Delta \Delta$
- 3) CAPACITY: 251.0mL \pm 7mL TO OVERFLOW Δ
- 4) LABEL PANEL WALL VARIATION NOT TO EXCEED .012 [0.30]
- 5) MINIMUM WALL IN LABEL PIN = .016 [0.41]
- 6) MINIMUM HEEL WALL THICKNESS = .012 [0.30]
- 7) MAXIMUM TAPER = .002/INCH [0.05]
- 8) MAXIMUM PERPENDICULARITY = .005 [0.13]
- 9) DIMENSIONS SHOWN IN [] ARE EXPRESSED IN MILLIMETERS
- 10) (BOXED) DIMENSIONS ARE CRITICAL TO PART FUNCTION
- 11) {BRACKETED} DIMENSIONS ARE MAJOR INSPECTION DIMENSIONS

E	RE-DRAW AND REVISED UPDATE TO CURRENT STANDARDS AND TITLE BLOCK	BG	MMR 03/18/19
4	ECN #1845; WEIGHT SPEC. OF \pm 1.5 WAS \pm 1		KD 03/21/13
3	ECN #1831; "T" & "E" SPEC. OF \pm .015 WAS \pm .012.		KD 05/22/12
2	ECN#1527: WJEHT: 26 \pm 1 WAS EST'D 26 \pm ; OVERFLOW: 251 \pm 7 WAS EST'D 251 \pm 7.		KP 12/14/00
1	ECN#1276, EST'D WEIGHT 26gr, WAS EST'D 27gr, DIM .038 WAS .054, DIM ϕ 1.511 WAS ϕ 1.529, <5" WAS 20"		AZ 12/17/98

DRAWING IS IN INCHES AND [MILLIMETERS]	THIS DRAWING CONTAINS CONFIDENTIAL & PROPRIETARY INFORMATION AND MAY NOT BE REPRODUCED IN WHOLE OR PART WITHOUT WRITTEN AUTHORIZATION FROM COMAR LLC		TITLE PX-225(225cc) WIDE MOUTH BOTTLE WITH 45mm SPL CT NECK FINISH		 220 LAUREL ROAD VOORHEES, NJ 08043 PART NO VARIOUS SCALE 1x1	
	TOLERANCES UNLESS OTHERWISE SPECIFIED	NAME	DATE	COMMENTS		
3 PLACE DECIMAL \pm .050	DRAWN BY	AZ	12/02/98	N/A	MOLD NO MB2180, MB2214	
2 PLACE DECIMAL \pm .06	CHECKED	BG	05/06/19		STATUS	STOCK
2 PLACE METRIC \pm 1.27	ENG APPR	JB	07/09/19		SIZE	B
1 PLACE METRIC \pm 1.5				SHEET	1 OF 1	
ANGLES \pm 1°				DWG NO	5471	
DO NOT SCALE DRAWING				REV	E	